



***"THE GEOMATHEMATICAL MODELS: THE MIRRORS OF GEOLOGICAL REALITY  
OR SCIENCE FICTIONS?"***

# **ABSTRACT & PROGRAM BOOK**

2015  
**MÓRAHALOM**

## IMPRESSUM

**Publisher:** Hungarian Geology Society - University of Szeged, Geology and Paleontology

**Editors:** Janina Horváth, Marko Cvetković, István Gábor Hatvani

**Circulation:** 60 copies

**ISBN:** 978-963-8221-58-2

**Subject Collection:** Geostatistics, GIS, Remote Sensing

### Organizers & Sponsors:



University of Szeged,  
Geology and Paleontology



Hungarian  
Geological Society



Geomathematical &  
Informatical Section of HGC



Geomathematical  
Section of Croatian  
Geological Society



MOL Plc.



SPE,  
Hungarian Section



IAMG  
Student Chapter Szeged

### NOTE

The content of proceedings has not been passed English proof reading by native speaker, and that is why solely the authors are responsible for the quality of language usage.

## PROGRAM

### Thursday (21<sup>th</sup> May)

#### 10:30-11:00 - OPENING CEREMONY

Janina **HORVÁTH** chairman, János **GEIGER** co-chairman, Marko **CVETKOVIĆ** co-chairman,

*You are kindly requested to arrive in time*

#### 11:00-12:15 – 1<sup>st</sup> SECTION

**Chairman: Marko CVETKOVIĆ**

11:00 – 11:25	István <b>NEMES</b>
<i>Combined Capillary Curves</i>	
11:25 – 11:50	János <b>GEIGER</b>
<i>Some applications of Markov-type sequential Gaussian co-simulations</i>	
11:50 – 12:15	Kálmán <b>BENEDEK</b>
<i>DFN Modelling: recent trends, capabilities, applications</i>	
12:15 – 12:40	László <b>GYÖRY</b>
<i>iCore – a unique approach to packing generation</i>	
12:40 – 13:00	Janina <b>Horváth</b>
<i>Identification of facies using Unsupervised Neural Network</i>	

#### 13:00 – 14:30 - Lunch break (Finger lunch in the lounge)

#### 14:30- 2<sup>nd</sup> SECTION

**Chairman: János GEIGER**

14:30 – 14:55	Bruno <b>SAFTIĆ</b> , Iva <b>TOMLIENOVIĆ</b> , D. Arandia- <b>KREŠIĆ</b> , M. <b>RISEK</b>
<i>Porosity distribution models for numerical estimates of the regional CO<sub>2</sub> storage potential in clastic sediments</i>	
14:55 – 15:20	Marija <b>PODBOJEC</b>
<i>Preliminary estimate of CO<sub>2</sub> storage capacity by geomodelling in Upper Miocene sandstones in the western part of Sava depression</i>	
15:20 – 15:45	Marko <b>CVETKOVIĆ</b> & Josipa <b>VELIĆ</b>
<i>Biogenic reactions and methane expulsion modelling from source rocks of Ravneš Member, Sava Depression</i>	

#### 15:45 – 16:10 - Coffee break

16:10 – 17:35	Angelika <b>SÓLA</b>
<i>Facies study to enhance ultimate oil recovery: A case history from Algyó field, SE – Hungary</i>	
17:35 – 18:00	János <b>BLAHÓ</b>
<i>Facies modelling in the focus of reservoir modelling</i>	
18:00 – 18:10	Levente <b>KISS (e-poster presentation)</b>
<i>3D modelling of a hydrocarbon reservoir formed in a delta slope</i>	

19:00 - Dinner (Varga Csárda)

## Friday (22<sup>st</sup> May)

### 9:00-10:15 – 3<sup>rd</sup> Section

Chairman: Omar **SLIMAN**

9:00 – 9:25	Tomislav <b>BAKETARIC</b>
<i>Subsurface modelling of the Neogene-Quaternary sediments based on digitalization of handmade regional geological maps</i>	
9:25 – 9:50	Marcell <b>LUX</b>
<i>Evaluation and Optimization of Multi-Lateral Wells Using MODFLOW- Unstructured Grid Code</i>	
9:50 – 10:15	Mátyás <b>SANOCKI</b>
<i>Importance of proper layering of 3D grids; how bedding parallel layering can enhance solve long-lasting stratigraphical and structural geological problems - a case study of facies modeling from the Tóalmás region, Hungary</i>	
10:15 – 10:40	Zsuzsa <b>BRINZANEK</b> , Sándor <b>TÓTH</b>
<i>Reservoir geology re-evaluation – case study of gas field of Pannonian age</i>	

10:40 – 11:00 - Coffee break

### 14:30-16:00 - 4<sup>th</sup> Section

Chairman: Janina **HORVÁTH**

11:00 11:25	Andrea <b>WÁGENHOFFER</b>
<i>Modeling geological structures with Training Image for Multiple-Point approach: from Theory to Practice</i>	
11:25 – 11:50	Petra <b>SLAVINIĆ</b>
<i>Subsurface volume calculation – a comparison between mathematical integration and cell-based models</i>	
11:50 – 12:15	Noémi <b>JAKAB</b>
<i>Uncertainty assessment based on static connectivity metrics</i>	

12:30 – 14:30 - Lunch break Lunch break (Finger lunch in the lounge)

14:30 - 14:55	Viktor <b>VOLFORD</b>
<i>Application of 3D seismic data to constrain the reservoir models</i>	
15:20 – 15:45	Omar <b>SLIMAN</b>
<i>Uncertainty delineation from the petrophysical modelling of Lower Nubian Reservoir</i>	
15:45 – 16:00	László <b>ZILÁHI-SEBESS</b> and Erika BODA
<i>Recommended principles of the qualifications of geothermal plays</i>	

**16:00 – 16:20 - Coffee break**

**16:20- 5<sup>th</sup> Section**

**Chairman: István HATVANI**

16:20 – 16:45	Gábor <b>SZATMÁRI</b>
<i>Using a sequential stochastic simulation approach based on regression kriging to generate functional soil maps</i>	
16:45 – 17:10	Dániel <b>TOPÁL</b> , István Gábor HATVANI, István MATYASOVSKY, Zoltán KERN
<i>Break-point detection algorithms tested on artificial time series</i>	
17:10 – 17:35	Sándor <b>GULYÁS</b> , Csilla BALOGH, Antónia MARCSIK, Pál SÜMEGI, Dávid KÓKAI
<i>Geometric morphometric analysis of artificially distorted skulls from an Avar Age site near Makó, SE Hungary</i>	
17:35 – 18:00	Petra <b>BODOR</b> , József KOVÁCS, Anita ERŐSS, Judit MÁDL-SZŐNYI
<i>Time series data analysis of parameters of lukewarm springs from the Rózsadomb area, Hungary</i>	

**18:30 - Dinner in the 'Pusztá'**



**The 'Tuk-Tuk' departs at 18:30 from the square next to congress center. If you late you will walk...**

**From 22:00 (p.m.) shuttle bus is available from the site to 'Congress center'**

## Saturday (23<sup>st</sup> May)

9:00 – 9:25	Szabolcs <b>BORKA</b>
<i>Analysis of deep-water clastic depositional systems' lithofacies based on their genetic by application of Markov chains and entropy tests</i>	
9:25 – 9:50	Viktória <b>PATAKI</b>
<i>3D modelling of a clastic turbiditic system and its uncertainty assessment: a case study from the Pannonian Basin, Hungary</i>	

**9:50 – 10:15 - Coffee break**

## 10:15-11:30 - Workshop

Scope: "Geological models supported by geomathematics: the mirrors of geological reality or science fictions?"

*First rule of the workshop: „Keep it in practice!”*

- What is a model?
- Is modelling really necessary? Why?
- What are the goals of building models?
- What types of approaches are used for modelling in the industry?
- What are the most important input data?
- Common gaps and controversies in input data, challenges during setting up a geological model
- Processes and methods to overcome these difficulties
- How to handle uncertainties? How to differentiate and mitigate stochastic and conceptual uncertainty?
- Feedback on the models

**Moderators:** István **NEMES**, Mátyás **SANOCKI**

Reservoir Geologists at MOL Group

11:30 – 12:00 – Closing ceremony

## ABSTRACTS

**Baketarić, Tomislav:** *Subsurface modelling of the Neogene-Quaternary sediments based on digitalization of handmade regional geological maps*

**Benedek, Kálmán:** *DFN Modelling: recent trends, capabilities, applications*

**Blahó, János:** *Facies modelling in the focus of reservoir modelling*

**Bodor, Petra et al:** *Time series data analysis of parameters of lukewarm springs from the Rózsadomb area, Hungary*

**Borka, Szabolcs:** *Analysis of deep-water clastic depositional systems' lithofacies based on their genetic by application of Markov chains and entropy tests*

**Brinzanek, Zsuzsa & Tóth, Sándor :** *Reservoir geology re-evaluation – case study of gas field of Pannonian age*

**Cvetković, Marko & Velić, Josipa:** *Biogenic reactions and methane expulsion modelling from source rocks of Ravneš Member, Sava Depression*

**Geiger, János:** *Some applications of Markov-type sequential Gaussian co-simulations*

**Győry, László:** *iCore – a unique approach to packing generation*

**Gulyás, Sándor et al:** *Geometric morphometric analysis of artificially distorted skulls from an Avar Age site near Makó, SE Hungary*

**Horváth, Janina:** *Identification of facies using Unsupervised Neural Network*

**Jakab, Noémi:** *Uncertainty assessment based on static connectivity metrics*

**Kiss, Levente:** *3D modelling of a hydrocarbon reservoir formed in a delta slope*

**Lux, Marcell:** *Evaluation and Optimization of Multi-Lateral Wells Using MODFLOW- Unstructured Grid Code*

**Nemes, István:** *Combined Capillary Curves*

**Pataki, Viktória:** *3D modelling of a clastic turbiditic system and its uncertainty assessment: a case study from the Pannonian Basin, Hungary*

**Podbojeć, Marija:** *Preliminary estimate of CO<sub>2</sub> storage capacity by geomodelling in Upper Miocene sandstones in the western part of Sava depression*

**Saftić, Bruno et al:** *Porosity distribution models for numerical estimates of the regional CO<sub>2</sub> storage potential in clastic sediments*

**Sanocki, Mátyás:** *Importance of proper layering of 3D grids; how bedding parallel layering can enhance solve long-lasting stratigraphical and structural geological problems - a case study of facies modeling from the Toalmas region, Hungary*

**Slavinić, Petra:** *Subsurface volume calculation – a comparison between mathematical integration and cell-based models*

**Sliman, Omar:** *Uncertainty delineation from the petrophysical modelling of Lower Nubian Reservoir*

**Szatmári, Gábor:** *Using a sequential stochastic simulation approach based on regression kriging to generate functional soil maps*

**Szilágyi-Sebők, Szilvia:**

**Sóla, Angelika:** *Facies study to enhance ultimate oil recovery: A case history from Algyő field, SE – Hungary*

**Topál, Dániel et al:** *Break-point detection algorithms tested on artificial time series*

**Volford, Viktor:** *Application of 3D seismic data to constrain the reservoir models*

**Wágenhoffer, Andrea:** *Modeling geological structures with Training Image for Multiple-Point approach: from Theory to Practice*

**Zilahi-Sebess, László & Boda, Erika:** *Recommended principles of the qualifications of geothermal plays*

## **Analysis of deep-water clastic depositional systems' lithofacies based on their genetic by application of Markov chains and entropy tests**

**Szabolcs Borka**

University of Szeged, Department of Geology and Paleontology

[borka.szabolcs@gmail.com](mailto:borka.szabolcs@gmail.com)

### **ABSTRACT**

In the past few decades the process-sedimentology has become more and more important in the characterization of the deep-water clastic depositional systems. In this way, the recognized faciological attributes can be associated with the depositional processes (e.g. deposits of slumps, sandy debris flows, turbidity currents etc). In this paper this approach is presented through a case study of Tercier deep-water sequence of the Pannonian-basin.

The cyclicity of sedimentary sequences can be easily revealed by using Markov chains. Though Markov chain analysis has broad application in mainly fluvial depositional environments, its utilization is uncommon in deep-water systems.

In this context genetic lithofacies were determined and analysed by embedded Markov chains. The randomness in the presence of lithofacies within a cycle was estimated by entropy tests (entropy after depositional, before depositional, for the whole system). Consequently the relationships between lithofacies were revealed. Of course it was necessary to interpret the stratigraphy of the sequences in terms of „general” sedimentology, focusing on the structural elements. For this purpose, well-logs and standard deep-water models were applied. The consequences coming from the comparison of „general” sequences (composed of architectural elements), the genetic-based sequences (showing the distributions of the genetic lithofacies) and the lithofacies relationships were discussed in details. In this way connections were found between the architectural elements and cyclic patterns of the lithofacies in each wells.

**Key words:** Markov chains, Pannonian-basin, deep-water systems, genetic lithofacies, depositional process

### **1. INTRODUCTION**

Vertical variations of lithofacies have an important role within a sedimentary sequence in recognition of depositional environment. According to Walther's facies correlation law (1893), only those facies can be settled on each other which can exist next to each other at a given time. Thus a quasi-gradual transition from one facies to another represents that the two facies were adjacent laterally once.

In deep-water depositional systems (i.e. submarine fan complex, Mutti & Normark, 1991) the distributions of the facies, the coarsening- and fining upward successions, the geometries and sand/mud contents of each parts lead to detect the so-called structural elements. Structural elements (i.e. sedimentary subenvironments) have been emphasized for decades in the major regional-scale models, such as Normark (1970), Mutti and Ricci Lucchi (1972), Mutti (1985), Reading and Richards (1994), Bouma (2000) etc. By revealing these, the potential hydrocarbon stratigraphy traps of these systems can be understood more efficiently.

The sediment deposition occurs mainly from gravity-driven processes (such as slumps, slides, cohesive debris flow, sandy debris flow, turbidity currents) in these systems. The sediment concentration and the deposit thickness as fraction of flow thickness decreases from slumps and

slides to turbidity currents. Redeposition by bottom currents also have an important role in these systems (Shanmugam, 2006). By application of the principles of the process sedimentology (it is concerned with establishing connectivity between the deposit and the physics of the depositional process), one can attach the identified faciological attributes (grain-size, textural and compositional maturity, sediment structures etc.) to the related depositional process. Thus genetic (corresponding to the dep. process) lithofacies (GLF) are obtained.

In order to determine regularity and cyclicity in sedimentary sequences, Markov-chains are common and useful methods. By using Markov-chains with the established genetic lithofacies, modal cycles (i.e. depositional model) can be developed.

Through the case study from Tercier (Late Miocene and Lower Pliocene) deep-water sedimentary sequence of the Pannonian-basin, the following methods are applied:

- recognizing the GLFs (on core samples), and deducing the significant vertical lithologic transitions in the examined sequences
- analysing cyclicity and significance of successions by chi-square and entropy tests (post-depositional, pre-depositional, whole-system entropies), respectively
- interpreting the "general" sedimentary sequences by the helps of well-logs and regional-scale models focusing on structural elements
- consequently, revealing connectivity between structural elements with potential hydrocarbon reservoir character and modal cycles, cyclic patterns (sets of post- versus pre-depositional entropies; Hattori, 1976).

## 2. GENERAL GEOLOGICAL SETTING OF THE REGION OF THE CASE STUDY

The case study (WELL-A) is located in deep subbasin of the Pannonian-basin in the Great Hungarian Plain.

At the start of Late Miocene the Central Paratethys had become a hydrologically isolated large lake (Lake Pannon), until it was completely filled (from Pleistocene). The process of filling up showed prograding feature and was controlled particularly by fluvial and deltaic systems during Late Miocene and Lower Pliocene. The sediment-supply derived from north-west and north-east, east (Juhász, 1994). Flora and fauna of Lake Pannon reached great endemic diversities (Magyar, 2010).

The following main depositional environments characterized Lake Pannon: (1) fluvio-lacustrine and deltaic plain (2) delta front and delta slope (3) prodelta (4) deep-water systems (5) basin plain (Bérczi, 1988)

The growths of deep-water systems belong to Szolnoki Formation (Gajdos, et. al, 1983). In the Great Hungarian Plain its thickest sequences (approx. <1000 m) take place in deep-subbasins (Jászság Basin, Derecske Trough, Makó Trough, Békés Basin) (Juhász, 1994).

### 3. METHODS

As previously mentioned, the analytical procedure consists of three steps: (1) interpreting the "general" sedimentary sequence (2) recognizing GLSs (3) quantitative stratigraphical analysis based on GLSs (embedded Markov-chains, entropy and chi-square tests).

#### 3.1. GENERAL SEDIMENTARY SEQUENCE

Average grain-size distribution, regularity of alternations of lithofacies in each parts and well-logs (SP, SPC, GR) are applied to reveal structure elements. The well-known log motifs refer to the structural elements in deep-water systems after Richards and Bowman (1998):

- bell: fining-upward succession, channel-levee complex, unchanneled lobe, abandonment of any channel or lobe
- funnel: coarsening-upward succession, development of distal lobe
- cylindrical: wedge-bodies, proximal main depositional channel, channelized lobe, lobe without channel-levee complex
- irregular: zone of slides and slumps, zone of sand sheets (inactive or distal part)
- symmetric: development then abandonment of channelized/unchanneled lobe

#### 3.2. Characterization of genetic lithofacies

The main gravity-driven processes that dominate in deep-water systems are: (1) slides and slumps (2) cohesive debris flows and sandy debris flows (3) turbidity currents. Reworking bottom currents also operate.

- (1) "A *slide* is a coherent mass of sediment that moves along a planar glide plane and shows no internal deformation" (Shanmugam, 2006, p. 49). "A *slump* is a coherent mass of sediment that moves on a concave-up glide plane and undergoes rotational movements causing internal deformation" (Shanmugam, 2006, p. 52). General features of deposits of slide and slump: (1) gravel to mud lithofacies (2) basal zone of shearing (3) tension faults (4) clastic and sand injections (5) secondary internal glide planes (slides) (6) alternations of contorted and uncontorted layers, chaotic bedding (slumps)
- (2) "*Debris flow* is a sediment flow with plastic rheology and laminar state from which deposition occurs through freezing en masse" (Shanmugam, 2006, p. 59). *Sandy debris flow* is a transformation between cohesive debris flow and turbidity current, with a lower laminar

and an upper turbulent part. The term "high-density turbidity current" is also used for this type of process (e.g. Lowe, 1982). It is misleading, because the bigger volume of the deposited sediment is derived from the lower part of flow, which is clearly not in turbulent state (Shanmugam, 2006). In this work, deposits of cohesive debris flow and of sandy debris flow is handled altogether. General features of deposits of cohesive or sandy debris flow: (1) gravel to mud lithofacies (2) floating mudstone clasts near top of the beds (3) projected, brecciated mudstone clasts (4) inverse, normal, inverse to normal, and no grading

- (3) "*Turbidity current* is a sediment flow with Newtonian rheology and turbulent state in which sediment is supported by turbulence and from which deposition occurs through suspension settling" (Shanmugam, 2006, p. 77, Middleton and Hampton, 1973). General features of deposits of turbidity current: (1) fine-grained sand to mud lithofacies (2) normal grading without any other structures (3) erosional (flute marks) basal contact (4) thin layers, mainly few centimetres
- (4) *Bottom currents* (induced by tidal, thermohaline or wind forces) are responsible particularly for traction structures in deep-water systems (Shanmugam, 2006). Their deposits can be characterized by: (1) fine-grained sand and mud lithofacies (2) thin-bedded, laminated sand with mud, and its rhythmic occurrence (3) low-angle cross laminae, ripple-cross laminae (4) flaser, lenticular bedding

### 3.3. Embedded Markov-chains, entropy analysis and chi-square test

The idea of cyclicity in sedimentary systems implies that one state (i.e. lithology) determine the succeeding state. In the case of embedded Markov-chain, only lithologic changes (abrupt change in character) are recorded, regardless of the thickness of each lithology member (or bed). Counting the transitions in the sequence, one step embedded tally count matrix ( $f_{ij}$ ) is structured (where  $i, j$  corresponds to row and column number). By means of it, upward ( $p_{ij}$ ) (i.e. transition probability matrix) and downward ( $q_{ij}$ ) probability matrices is calculated (Gingerich, 1969). For establishing the expected transition frequency ( $e_{ij}$ ) and therefrom the independent trials probability ( $r_{ij}$ ) matrices, iterative procedure of Powers and Easterling (1982) is applied. Normalized difference matrix ( $D_{ij}$ ) is obtained by subtracting the value of each cell in the independent trials probability matrix ( $r_{ij}$ ) from the corresponding cell in the transition probability matrix ( $p_{ij}$ ). The cells where positive values are present (at given limiting value) show those transitions which have Markovian property (i.e. cyclicity). Hattori (1976) introduced the entropy analysis in Markov-chains and general cyclic patterns in sedimentary successions. Post- E(post), pre- E(pre) and whole depositional system E(sys) entropy values are calculated from upward and downward probability matrices, respectively, by application

of modified Shannon-entropy (entropy value gives the rate of uncertainty of the occurrence of a facies). Generally, entropy is likely to increase with the number of states. Thus, entropy values must be normalized (by dividing both of E(post) and E(pre) by E(max), where E(max) is the maximum possible entropy in the system). The non-randomness of the obtained modal cycles are tested by chi-square test.

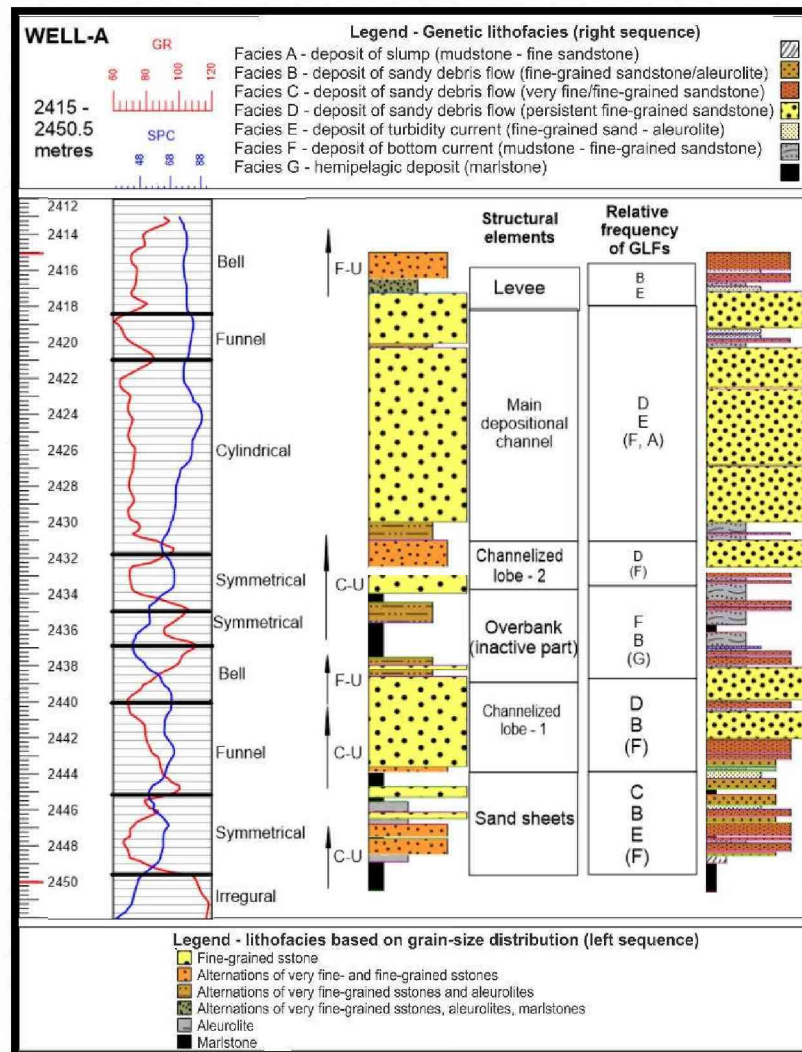
#### 4. QUALITATIVE AND QUANTITATIVE RESULTS

In the WELL-A, **Figure 1** shows the general sedimentological explanation. Structural elements are revealed. Potential hydrocarbon reservoirs could occur in "channelized lobe 1-2", and "main depositional channel". The recognized genetic lithofacies are: (1) Facies A - *deposit of slump* – chaotic bedding, mud- to fine-sandstone (ss) (2) Facies B-D – *deposits of sandy debris flows* – graded bedding, floating clasts; B – fine-ss/aleurolite, C – very fine-/fine-ss, D – persistent (thickness >1m) fine-ss) (3) Facies E - *deposit of turbidity current* – normal grading, fine-ss and aleurolite (4) Facies F – *deposit of reworking bottom current* – laminated bedding, ripple-cross lamination, cross lamination, flaser and lenticular bedding – mudstone/fine-ss (5) Facies G – *hemipelagic settling* – marlstone. Based on transitions of the GLFs, another sequence is structured (**Figure 1**). Approximately relative frequencies of GLFs in each zone of structural elements are deduced.

In aspect of quantitative stratigraphical analysis, all matrices mentioned above and entropy values are calculated. Transition tally count, difference matrices, entropy values and chi-square test can be seen in **Table 1**. Facies relationship diagram (FRD) based on positive difference values also is constructed (**Figure 2**).

**1. Table WELL-A: transition count matrix, difference matrix with positive values (limiting value is average of the non-negative differences: 0.1357), normalized entropies of each GLF, entropy of the whole system, and stationarity test by chi-square test**

	Transition tally count matrix (p <sub>ij</sub> )							Difference matrix with positive* values (D <sub>ij</sub> )						
	A	B	C	D	E	F	G	A	B	C	D	E	F	G
A	0	1	1	1	0	0	0			0.226	0.226			
B	0	0	1	1	3	10	2					0.155	0.168	
C	1	2	0	0	2	1	1							
D	1	0	0	0	1	5	0							0.370
E	0	1	3	0	0	4	0			0.258			0.150	
F	0	12	1	5	2	0	1		0.188					
G	1	2	1	0	0	1	0	0.153						
	Norm. E(pre)			Norm. E(post)				Non-randomness test: chi-square test						
A	0.613			0.613				Degree of freedom=(N-1) <sup>2</sup> -N						
B	0.603			0.672				where N=observed states						
C	0.823			0.865				DOF=29, χ <sup>2</sup> =39.87						
D	0.444			0.444				Limiting confidence level values at 29 DOF						
E	0.737			0.544				90%		95%				
F	0.726			0.656				39.09		42.56				
G	0.58			0.744				Markov-process: stationary						
E(sys)= 9.133 E(max)= 2.585														



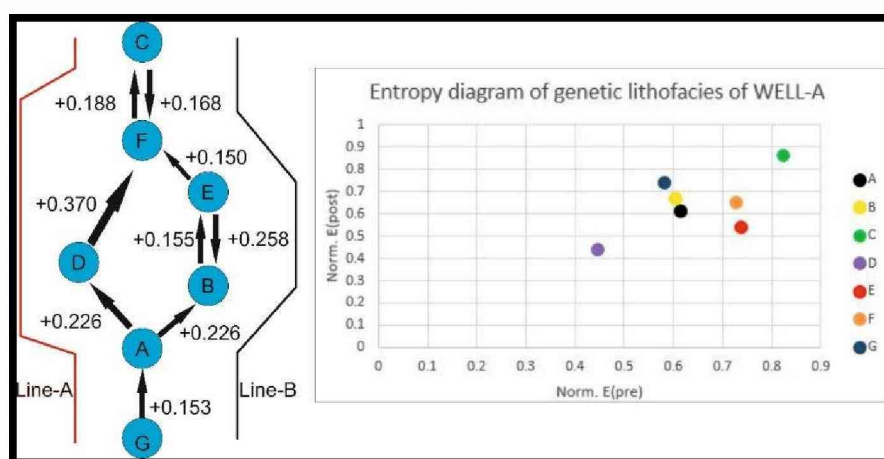
**Figure 9** Composite figure of WELL-A. Left part: General sedimentological sequence, emphasizing structural elements. Right part: sequence based on GLFs. Connection between the two parts is showed by relative frequencies of GLFs in each structural elements

There are two possible ways in FRD (heretopic facies), but in one well (i.e. sequence) they cannot appear simultaneously. Therefore the line with higher possibility value (multiplying the difference values in each way) – line-A – is chosen for developing modal cycle. Post- and pre-depositional diagram shows most closely symmetrical figure (Hattori's type-B diagram, 2. Figure). Modal cycle has pattern of GADFCF with 90% confidence level.

Modal cycle suggests that if persistent deposit of sandy debris flow (Facies D, potential HC-reservoir) appears once, it is followed by deposit of bottom current (Facies F), which has lower permeability because of its traction structures and finer grain-fraction. It means possible capping attributes. Unrestricted alternation of Facies F and C can denote additional reservoir-capping relationship with

thinner sandstone reservoir (Facies C). Furthermore, Facies C has the highest value of normalized post depositional entropy which implies that its successor varies widely, hence marlstone can overlie on it as the best caprock.

The geological interpretation of the cyclical sequence is: (1) initial state is Facies G, which denotes the hemipelagic settling on basin plain (2) Facies A may denote slumps and slides, related to undercutting of channels. It is followed by (3) channel-fills (Facies D). Facies D seizes relatively the thickest part of the whole sequence. It follows that this complex is dominated by channel-systems (as main supplier channel or distributary channel). (4) Facies F denotes functioning of bottom currents. It is related to the inactive zones, so the channels migrate. (5) Facies C may show the overflows over the margin of the channels. The symmetrical attribute refers to that the whole system migrates laterally.



10. Figure Facies relationship diagram of WELL-A. Line-A is chosen for modal cycle. Entropy diagram shows symmetrical shape, A = "Facies A", B = "Facies B", C = "Facies C", D = "Facies D", E = "Facies E", F = "Facies F", G = "Facies G"

## 5. DISCUSSIONS

WELL-A reveals a part of a typical sand-rich submarine fan complex with quasi-inactive parts (zone of thin sand sheets and overbank), channelized lobes (persistent sandstones in them may denote distributary channels) and main depositional channel. Potential hydrocarbon reservoirs may take place in channelized lobes (1-2) and main depositional channel.

*Channelized lobe-1* is composed of mainly Facies D, and then, of lower proportion of Facies B and F. In case of Line-1, occurrence of Facies B is random. Subsequently, this part of sequence has cyclic alternation of reservoir sandstone (D) and finer-grained rock with traction structures with ability of trapping (F).

*Channelized lobe-2* is composed of mainly facies D and Facies F. The situation is the same as in channelized lobe-1.

*Main depositional channel* is composed of Facies D, E and in smaller part, Facies F, A. Occurrence of Facies E is random, according to line-A. Facies A usually behave as a reservoir (Shanmugam, 2006). Presence of Facies D and F denote the same former state. Maybe this is the best hydrocarbon reservoir zone because Facies D reaches its thickest developments here.

## 6. CONCLUSIONS

On the strength of qualitative and quantitative analyses of WELL-A, main depositional channel has the best, and channelized lobes 1-2 have good potential hydrocarbon reservoir attributes, with symmetric alternation of facies D and F (a probably reservoir-caprock relationship). Occurrence of facies C is random, but its successor varies widely (it can be marlstone, facies G, as well) due to its high normalized post-depositional entropy.

Generally, linking the structural elements and modal cycles based on genetic lithofacies is a good contrivance to reveal the nature of stratigraphy traps in deep-water systems. By means of it, it is possible to analyse the internal structure of each structural elements. In addition, inferences can be concluded about which depositional processes dominate in the different structural elements.

## ACKNOWLEDGEMENTS

I am grateful to János Geiger and Janina Horváth, University of Szeged, for their helpful and corrections. The quantitative results were calculated by a computer software (written in FORTRAN 77) programmed by János Geiger. I am also thankful to MOL Nyrt. for the well-logs and core samples.

## REFERENCES

- BÉRCZI, I. (1988): Preliminary sedimentological investigation of a Neogene Depression in the Great Hungarian Plain. –In: ROYDEN, L. H., & HORVÁTH, F. (eds.): The Pannonian Basin: A study in basin evolution, AAPG Memoir 45, 107-116.
- BOUMA, A. H., (2000): Coarse-grained and fine-grained turbidite systems as end member models: applicability and dangers. *Marine and Petroleum Geology*, 17, pp. 137-143.
- GAJDOS, I., PAPP S., SOMFAI A. & VÖLGYI L. (1983): Az alföldi pannóniai (s.l.) litosztratigráfiai egységei, (Lithostratigraphic units of the Pannonian (s.l.) formations in the Hungarian Plain.), MÁFI, Budapest, 70 p.
- GINGERICH, P. D. (1969) Markov analysis of cyclical alluvial sediments; *Journal of Sedimentary Petrology*. 39, 330–332.

- HATTORI, I. (1976): Entropy in Markov Chains and Discrimination of Cyclic Patterns in Lithologic Successions, *Mathematical Geology*, 8, 4, 477-497.
- JUHÁSZ, GY. (1994): Magyarországi neogén medencerészekpannóniai s.l. üledéksorának összehasonlító elemzése, *Földtani Közlöny*, 124/ 4, 341-365.
- LOWE, D.R., (1982): Sediment gravity flows; II, Depositional models with special reference to the deposits of high-density turbidity currents: *Journal of Sedimentary Petrology*, v. 52/1, p. 279-297.
- MAGYAR, I. (2010): A Pannon-medence ősföldrajza és környezeti viszonyai a késő miocénben, Institute of Geography and Geology, University of Szeged, Szeged, 141 p.
- MIDDLETON, G.V., & M.A. HAMPTON, (1973): Sediment gravity flows; mechanics of flow and deposition: *Soc. Econ. Paleontol. Mineral., Pacific Section*, Los Angeles, California, USA, 1-38.
- MUTTI, E., (1985): Turbidite systems and their relations to depositional sequences. In: Zuffa, G.G. (Ed.), *Provenance of Arenites*. D. Reidel Publishing Company, 65–93.
- MUTTI, E., & NORMARK, W. R. (1991). Seismic facies and sedimentary processes of submarine fans and turbidite systems. *New York: Springer-Verlag*, 75-106.
- MUTTI, E. & RICCI LUCCHI, F., (1972): Turbidites of the northern Apennines: introduction to facies analysis (english translation: NIELSEN, T. H., 1978). *International Geology Review*, 20., 125–166.
- NORMARK, W. R., (1970): Growth patterns of deep sea fans. *AAPG Bulletin*, 54., 2170–2195.
- POWERS, D.W. & EASTERLING, G. R. (1982): Improved methodology for using embedded Markov chains to describe cyclical sediments; *Journal of Sedimentary Petrology*, 53, 913–923.
- READING, H. G. & RICHARDS, M., (1994): Turbidite systems in deep-water basin margins classified by grain size and feeder system. *AAPG Bulletin*, 78.. kötet, p. 792–822.
- RICHARDS, M., & BOWMAN M., (1998): Submarine fans and related depositional systems II: variability in reservoir architecture and wireline log character, *Marine and Petroleum Geology*, 15, 821-839.
- SHANMUGAM, G. (2006): *Deep-Water Processes and Facies Models: Implications for Sandstone Petroleum Reservoirs*, 1st ed., Elsevier, Amsterdam, The Netherlands, 498 p.
- WALTHER, J. (1893): *Einleitung in de Geologie als historische Wissenschaft-Jena*; V. 1055.