



ACM -V



SCIENTIFIC BULLETIN

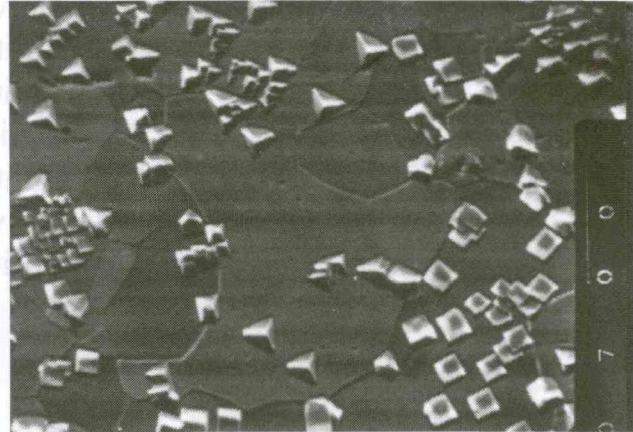
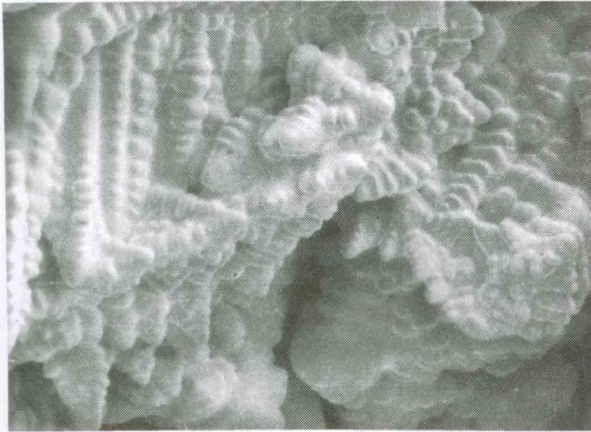
of
the „POLITEHNICA” University of Timișoara, Romania

Transactions on MECHANICS

XIth International Symposium

Young People and Multidisciplinary Research

Organizer: Association for Multidisciplinary Research in the West Zone of Romania



Tom 54(68), Fascicola Special ISSUE S1, 2009

ISSN 1224-6077



EDITURA POLITEHNICA

CONTENTS

- 1 **C. BĂRBULESCU, N. HERIȘANU, V. BACRIA** - Investigation methods of the acoustic field generated by the electrical installations
- 2 **D. BUZDUGAN, V. A. ȘERBAN, C. CODREAN, D. UȚU, C. OPRIȘ** - Experiments regarding the elaboration of ferromagnetic bulk nanocrystalline alloys
- 3 **B. COZMA, G. URDEA, I. DUMITRESCU, V. ITU** - Stand for the rotative boring of soft rocks
- 4 **C. DOROHAI, I. MITELEA, C. M. CRĂCIUNESCU** - The process of loading and unloading capacitors stored energy welding on Fe-Mn-Si shape memory alloys
- 5 **C. GROZA, I. MITELEA, M. POPESCU** - Aspects of austenitic stainless steels weldability
- 6 **A. JURCA, E. GHICIOI, N. VĂTAVU, F. BERZAN** - Risk ignition assessment methodology for the non-electrical equipment intended for use in environments endangered by explosive atmospheres
- 7 **N. PAȘCA, C. BECHIR, N. FAUR** - Study of theoretical nominal coefficient variation of stress concentration based on the distance between two holes unbalanced for a plate of finite width
- 8 **M. POȘOGAN, L. BOȚILĂ, C. CIUCĂ, A. CAZACU** - Development of FSW welding tools for Al 6082-t651 and Al 7075-t651 hard aluminium alloys
- 9 **R. ROȘU, D. UȚU** - Applications of the HVOF thermal spraying process in surface engineering

CUPRINS

- C. BĂRBULESCU, N. HERIȘANU, V. BACRIA** - Metode de investigare a câmpului acustic produs de instalațiile electrice 1
- D. BUZDUGAN, V. A. ȘERBAN, C. CODREAN, D. UȚU, C. OPRIȘ** - Experimentări privind obținerea aliajelor feromagnetice nanocristaline masive 7
- B. COZMA, G. URDEA, I. DUMITRESCU, V. ITU** - Stand pentru perforarea rotativă a rocilor moi 13
- C. DOROHAI, I. MITELEA, C. M. CRĂCIUNESCU** - Procesul de încărcare - descărcare a condensatoarelor la sudarea cu energie înmagazinată a aliajelor Fe-Mn-Si cu efect de memorie a formei 19
- C. GROZA, I. MITELEA, M. POPESCU** - Aspecte ale sudabilității oțelurilor inoxidabile austenitice 25
- A. JURCA, E. GHICIOI, N. VĂTAVU, F. BERZAN** - Metodologie de evaluare a riscului de aprindere la echipamentele neelectrice destinate utilizării în medii periclitare de atmosfere explozive 31
- N. PAȘCA, C. BECHIR, N. FAUR** - Studiul variației coeficientului teoretic nominal de concentrare a tensiunilor în funcție de gradul de dezaxare a două găuri străpunse inegale pentru o placă de latime finită 35
- M. POȘOGAN, L. BOȚILĂ, C. CIUCĂ, A. CAZACU** - Dezvoltarea de unelte de sudare FSW pentru aliaje dure de aluminiu Al 6082-T651 ȘI Al 7075-T651 41
- R. ROȘU, D. UȚU** - Aplicații ale procedurii de pulverizare termică HVOF în ingineria suprafețelor 47

- 10 **J. SÁROSI, J. GYEVIKI** - Investigations of pneumatic artificial muscles 53
- 11 **S. SIMION, D. VASILESCU, S. SPIRIDON** - Determination of the acoustic parameters of the hammers and hewing perforators used in technological systems mining for extraction of useful mineral substances 59
- 12 **T. SZÉPE, J. SÁROSI** - Matlab models for pneumatic artificial muscles 65
- 13 **G. URDEA, B. COZMA, V. ITU, I. DUMITRESCU** - Analysis of systemic transport to Petrita Mining Plant 71
- 14 **C. BOANTĂ, I. GHERGHE, L. JURCA, D. CIOCLEA** - Technical measure used to provide a stable operating regime of VOD-3.0 fans at the main ventilation station at Paroşeni mine 79
- 15 **L. RADOVANOVIC, J. PEKEZ, A. ZIVOSLAV** - The implementation of condition-based maintenance for machinery diagnostic 82
- J. SÁROSI, J. GYEVIKI** – Investiğații asupra muşchilor pneumatici artificiali
- S. SIMION, D. VASILESCU, S. SPIRIDON** - Determinarea parametrilor puterii acustice la ciocanele de abataj și perforatoare rotopercutante utilizate în sistemele tehnologice miniere de extragerea a SMU
- T. SZÉPE, J. SÁROSI** – Model Matlab pentru muşchi penumatici artificiali
- G. URDEA, B. COZMA, V. ITU, I. DUMITRESCU** - Analiza sistemică a transportului la Exploatarea Minieră Petrita
- C. BOANTĂ, I. GHERGHE, L. JURCA, D. CIOCLEA** - Măsurile tehnice de asigurare a funcționării în regim stabil al ventilatoarelor VOD – 3.0 de la stația principală de ventilație din cadrul E. M. Paroşeni
- L. RADOVANOVIC, J. PEKEZ, A. ZIVOSLAV** - Implementarea mentenantei bazate pe starea echipamentului pentru diagnoza echipamentelor

MATLAB MODELS FOR PNEUMATIC ARTIFICIAL MUSCLES

Tamás SZÉPE*, József SÁROSI**

* Department of Computer Algorithms and Artificial Intelligence, Institute of Informatics, University of Szeged
Árpád tér 2., Szeged, H-6720, Hungary, e-mail: szepet@inf.u-szeged.hu

** Department of Technical and Process Engineering, Faculty of Engineering, University of Szeged
Mars tér 7., Szeged, H-6724, Hungary, e-mail: sarosi@mk.u-szeged.hu

Abstract. Pneumatic artificial muscles (PAMs) are becoming more commonly used as actuators in modern robotics. The most made and common type of these artificial muscles in use is the McKibben artificial muscle that was developed in 1950's.

This paper presents the geometric model of PAM and different Matlab models for pneumatic artificial muscles. The aim of our models is to relate the pressure and length of the pneumatic artificial muscles to the force it exerts along its entire exists.

Keywords: artificial muscles, robotics, pneumatic systems

1. Introduction

McKibben muscle is an actuator, which converts pneumatic (or hydraulic) energy into mechanical form by transferring the pressure applied on the inner surface of its bladder into the shortening tension ([1]). The principle of pneumatic artificial muscle is well described in [2], [3], [4], [5] and [6]. There exists several types of fluidic muscles that are based on the use of rubber or some similar elastic materials, such as the McKibben muscle, the Rubbertuator made by Bridgestone company, Air Muscle made by Shadow Robot company, Fluid Muscle made by Festo company, Pleated PAM developed by Vrije University of Brussel, ROMAC (RObotic Muscle ACTuator), Yarlott and Kukolj PAM and some others ([2] and [7]). They possess several advantages over other types of actuators but most of all, it is their power-to-weight ratio. Due to

high nonlinearity of pneumatic systems, pneumatic artificial muscles are difficult to control so a fast and robust control is necessary to achieve the desired motion ([5], [7], [8] and [9]).

The PAM that was selected as the actuator for our study is the Fluidic Muscle (DMSP-20-200N-RM-RM) manufactured by FESTO. According to its specification, maximum contraction over the nominal length is 25-27 %.

2. Geometric model of the pneumatic artificial muscles

A good background of our test-bed can be found in [10] and [11].

The general behaviour of PAM with regard to shape, contraction and tensile force when inflated will depend on the geometry of the inner elastic part and of the braid at rest (Fig. 1), and on the materials used ([2]).

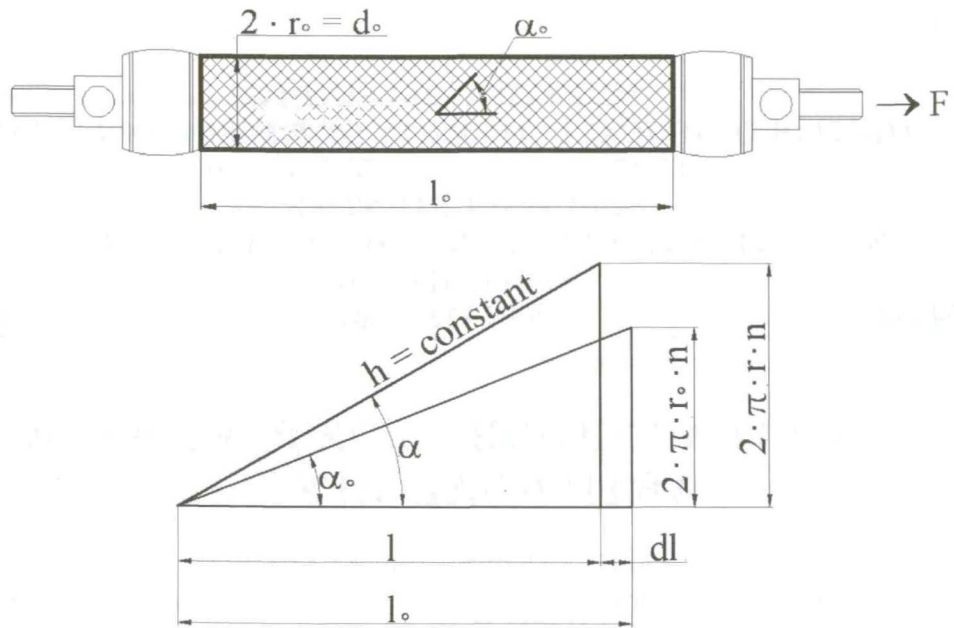


Figure 1. Geometry parameters of PAM

Typical materials used for the membrane construction are latex and silicone rubber, while nylon is normally used in the fibres (Figure 2).

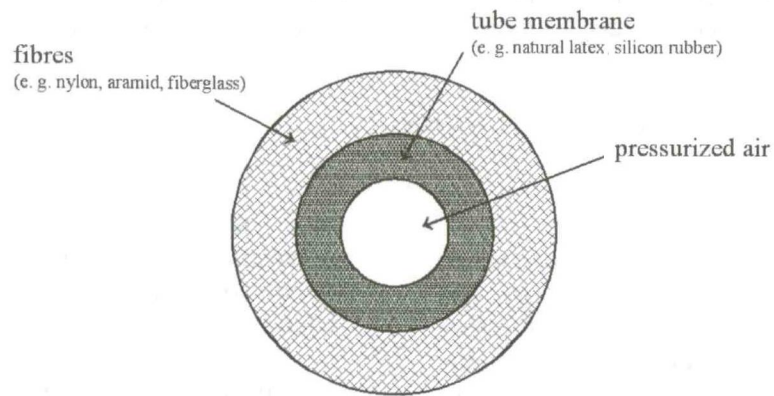


Figure 2. PAM and its orthotropic material layers

With the help of [5] and figure 1, the force can be calculated:

$$F = \dots \left(\dots \right) = \dots \dots \dots \quad (1)$$

with $\dots = \dots$, $\dots = \dots$, $\dots = \dots$ and $\dots \leq \dots \leq \dots$

F the pulling force, p the applied pressure, r_0 , l_0 , α_0 the initial inner radius and length of the PAM and the initial angle between the thread and the

muscle long axis, r , l , α the inner radius and length of the PAM and angle between the thread and the muscle long axis when the muscle is

contracted, h the constant thread length, n the number of turns of thread and κ the contraction.

In literature we can find some consideration to improve equation 1. [5] reports that we need to complete this initial approximation with a correction factor (ϵ), on the one hand, (1) does not pay attention to the material that the muscle is

made of, on the other hand, it predicts for various pressure the same maximal contraction. This new equation is very good for higher pressure ($p \geq 2$ bar). [12] suggests to achieve similar approximation for smaller pressure another correction factor (μ) is needed so the modified equation is:

$$F = \dots \dots \dots (2)$$

with \dots and \dots

3. Matlab models for pneumatic artificial muscles

Matlab is common software for modelling, simulating and analyzing. First of all, on the basis

of equation 2 we have designed the block diagram in Matlab as shown in figure 3. Constants are programmed and defined in an M-file.

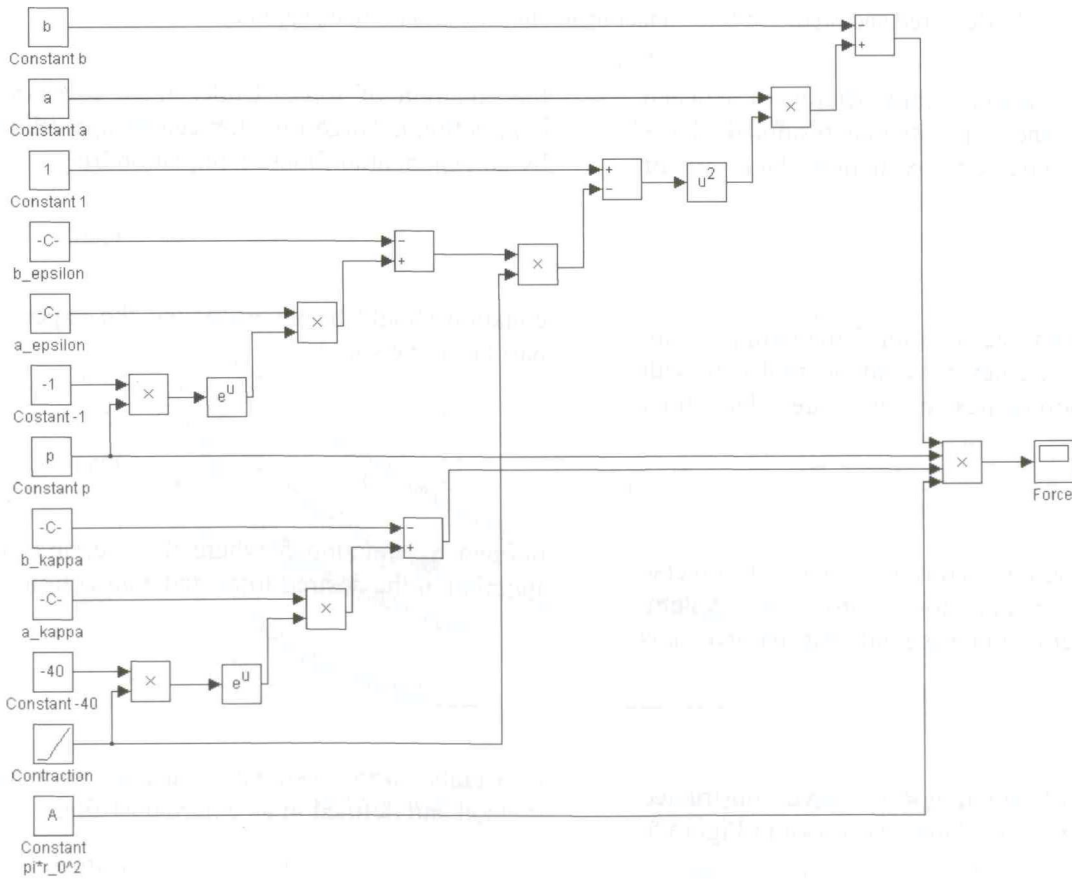


Figure 3. Block diagram of the equation 2 in Matlab

The results of equation 2 and measured data can be compared in Fig. 4. The unknown a_ϵ , b_ϵ , a_κ and

b_κ parameters were estimated using least-square method.

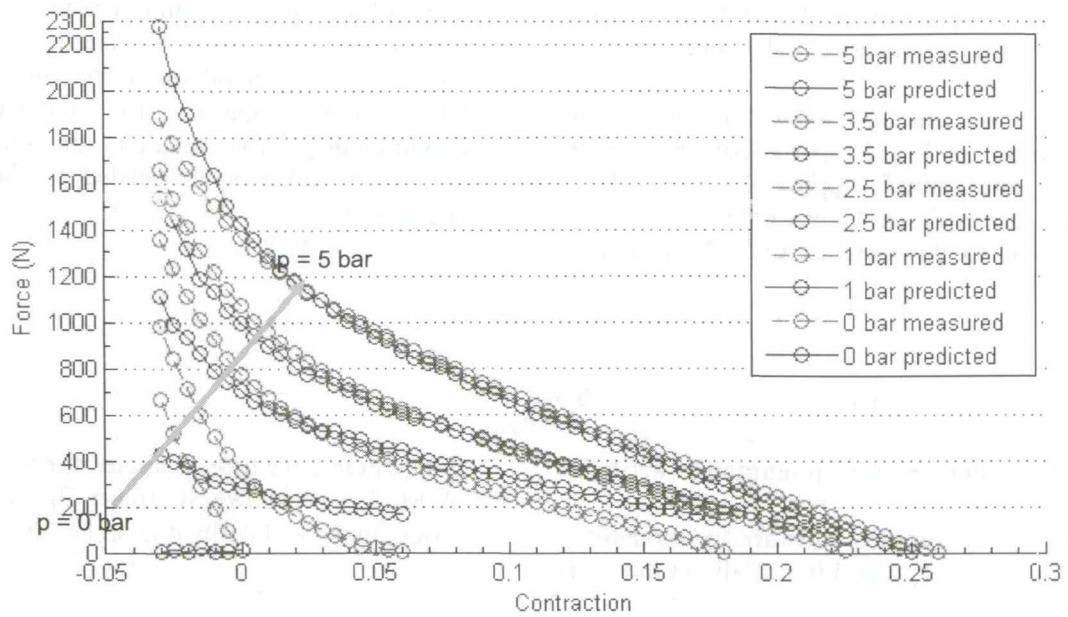


Figure 4. Measured and predicted force under different pressures (with equation 2)

With regard to the significant differences between the theoretical and experimental results we have worked out a better approximation algorithm for

the equation of force. Under fixed pressure the contraction to force function can be approximated by an exponential function (equation 3):

$$K \cdot e^{-\alpha \cdot \text{Contraction}} \quad (3)$$

In order to generalize equation 3 to attain pressure dependency, variables need to be replaced with first order polynomials of pressure. The final

equation should be invertible, so the exponential part has to be simple.

$$= \dots + \dots + \dots + \dots + \dots + \dots + \dots \quad (4)$$

For an open-looped control system an inverse model is necessary to control the system. Although the equation 4 is nonlinear, its inverse is

defined as equation 5 where the pressure is the function of the desired force and contraction.

$$\dots \quad (5)$$

On the basis of equation 4 we have constructed the block diagram in Matlab as shown in Figure 5.

Constants were estimated using least-square method and defined in an external M-file.

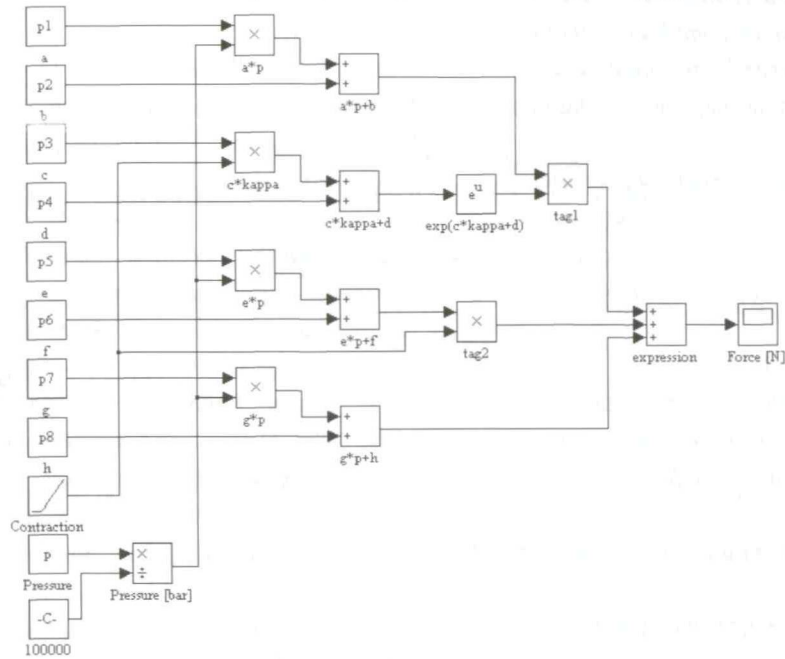


Figure 5. Block diagram of the equation 4 in Matlab

The results of equation 4 and measured data can be compared in Figure 6.

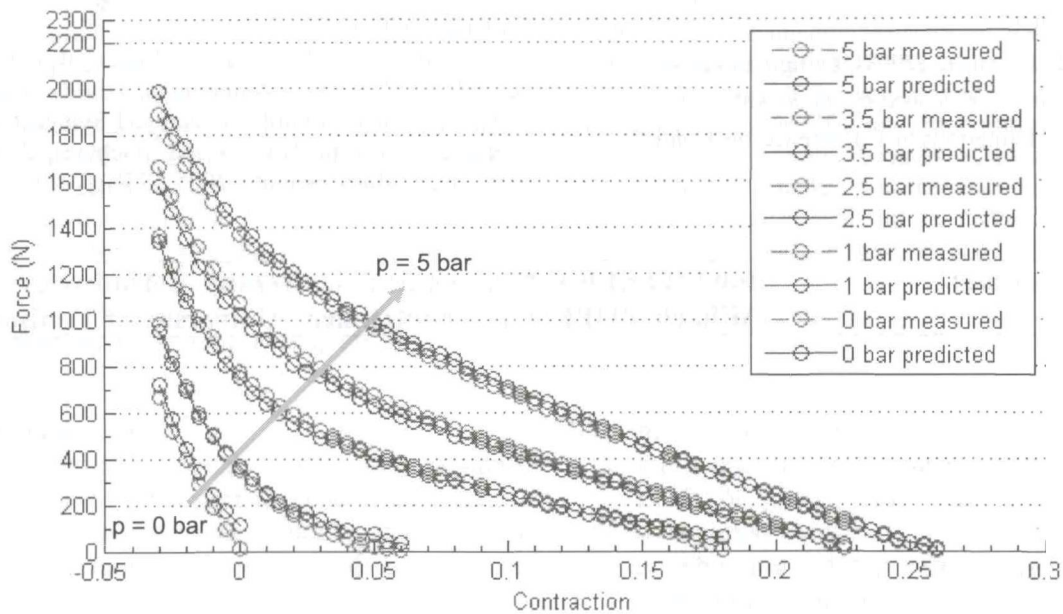


Figure 6. Measured and predicted force under different pressures (with equation 4)

Conclusions and future work

Pneumatic artificial muscle or McKibben muscle has outstanding capabilities due to its extreme power to weight (and volume) ratio. Designing an adequate control mechanism for this highly non-linear system needs accurate modelling. In this paper an invertible yet accurate and simple model of the pneumatic muscle is shown. The agreement of simulation results on the experimental results confirms the viability of the proposed model. Future work will be devoted to designing an open-

looped control system based on the presented model, and improving it with dynamic properties like hysteresis and aging.

References

- 1 C. P. Chou, B. Hannaford, *Measurement and modelling of McKibben pneumatic artificial muscles*, IEEE Transactions on Robotics and Automation, Volume 12 (1), 1996, pp. 90-102, ISSN 1042-296X

- 2 F. Daerden, *Conception and realization of pleated artificial muscles and their use as compliant actuation elements*, PhD Dissertation, Vrije Universiteit Brussel, Faculteit Toegepaste Wetenschappen Vakgroep Werktuigkunde, 1999, pp. 5-33.
- 3 F. Daerden, D. Lefeber, *Pneumatic artificial muscles: actuator for robotics and automation*, European Journal of Mechanical and Environmental Engineering, 2002, Volume 47, pp. 10-21, ISSN 1371-6980
- 4 D. Caldwell, M. J. Goodwin G. Razak, *Braided pneumatic muscle actuators*, Proceedings of the IFAC Conference on Intelligent Autonomous Vehicles, Southampton, United Kingdom, 18-21 April, 1993, pp. 507-512, ISSN 0278-3649
- 5 P. Lopez, B. Tondu, *Modelling and control of McKibben artificial muscle robot actuator*, IEEE Control System Magazine, Volume 20, 2000, pp. 15-38, ISSN 0888-0611
- 6 M. Balara, A. Petík, *The properties of the actuators with pneumatic artificial muscles*, Journal of Cybernetics and Informatics, Volume 4, 2004, pp. 1-15, ISSN 1943-7978
- 7 Situm, Z. and Hecceg, Z. (2008), *Design and control of a manipulator arm driven by pneumatic muscle actuators*, 16th Mediterranean Conference on Control and Automation, Ajaccio, France, 25-27 June, 2008, pp. 926-931.
- 8 D. G. Caldwell, M. Goodwin G. A. Medrano-Cerda *Control of pneumatic muscle actuators*, IEEE Control System Magazine, Volume 15 (1), 1995, pp. 40-48, ISSN 0888-0611
- 9 D. G. Caldwell, C. J. Bowler, G. A. Medrano-Cerda, 1995, *Adaptive position control of antagonistic pneumatic muscle actuators*, International Conference on Intelligent Robots and Systems, Pittsburgh, PA, USA, 5-9 August, 1995, pp. 378-383.
- 10 P. Tomán, J. Gyeviki, T. Endrődy, J. Sárosi A. Véha, 2008, *Design and fabrication of a test-bed aimed for experiment with pneumatic artificial muscle*, International Conference on Science and Technique in the Agri-food Business, Szeged, Hungary, 5-6 November, 2008, pp. 361-367, ISBN 963 482 676 8
- 11 T. Endrődy, J. Gyeviki, J. Sárosi, G. Szabó, P. Szendő, *Characteristics of the pneumatic artificial muscles*, International Conferences in Agricultural Engineering "Synergy and Technical Development", Gödöllő, Hungary, 30 August - 03 September, 2009, Conference CD, p. 6.
- 12 T. Kerscher, J. Albiez, J. M. Zöllner, R. Dillmann *FLUMUT - Dynamic Modelling of Fluidic Muscles using Quick-Release*, 3rd International Symposium on Adaptive Motion in Animals and Machines, Ilmenau, Germany, 25-30 September, 2005, ISSN: 1729-5506.

Scientific reviewers:

Ion MITELEA, "Politehnica" University of Timișoara
Mihaela POPESCU, "Politehnica" University of Timișoara
