



Cite this: *Dalton Trans.*, 2017, **46**, 8157

Exploring the boundaries of direct detection and characterization of labile isomers – a case study of copper(II)–dipeptide systems†

Eszter N. Tóth, ^{a,b} Nóra V. May, ^c Antal Rockenbauer, ^{d,e} Gábor Peintler ^f and Béla Gyurcsik ^{*a}

The investigation of the linkage isomers of biologically essential and kinetically labile metal complexes in aqueous solutions poses a challenge, as these microspecies cannot be separately studied. Therefore, derivatives are commonly used to initially determine the stability or spectral characteristics of at least one of the isomers. Here we directly detect the isomers, describe the metal ion coordination sphere, speciation and thermodynamic parameters by a synergistic application of temperature dependent EPR and CD spectroscopic measurements in copper(II)–dipeptide systems including His-Gly and His-Ala ligands. The $\Delta H = (-23 \pm 4) \text{ kJ mol}^{-1}$ value of the standard enthalpy change corresponding to the peptide-type to histamine-type isomerisation equilibrium of the $[\text{CuL}]^+$ complex was corroborated by several techniques. The preferential coordination of the side-chains was observed at lower temperatures, whereas, metal-binding of the backbone atoms became favourable upon increasing temperature. This study exemplifies the necessity of using temperature dependent multiple methodologies for a reliable description of similar systems for upstream applications.

Received 10th March 2017,
Accepted 21st May 2017

DOI: 10.1039/c7dt00884h

rsc.li/dalton

Introduction

Similarly to the understanding of basic biological and chemical processes, the design of a new drug or a catalyst also demands the characterization of isomeric species. Metal complexes exhibit structural (e.g. linkage, coordination isomers, or complexes of ligand isomers), and stereo (such as geometrical, optical and conformational) isomers. More sophisticated induced geometrical,¹ *mer/fac*,^{2,3} electronic,⁴ topological^{5–7} isomers or rotamers,^{8–10} as well as the controversial bond-stretch or distortion isomerism^{11–14} are also frequently dis-

cussed in the literature. The isomers exhibit altered physico-chemical properties that affect their reactivity and structure. The microenvironment around the metal ion affects the catalytic activity and selectivity of metalloenzymes or their small molecular model compounds. It determines their ability to recognize substrates, provide reactive sites by transactivation, electrostatically activate the substrate, generate nucleophile agents in hydrolytic reactions, or stabilize either the transition state or the products.^{15–26} The binding mode of metal ions greatly influences the conformation of ligands^{27,28} and *vice versa*. The change in the protein structure induced by metal binding may lead to functional^{29–35} or pathogenic^{36–44} complexes. The recognition of the importance of coordination isomers has opened a new era in metallopharmaceutical design.^{45,46} Drug delivery,⁴⁷ bioprocessing,^{48–50} drug activity,^{51–53} drug selectivity^{26,54} and resistance^{55–59} can be optimized by selecting an isomeric drug or a prodrug with the best properties.

All metal complexes formed with multidentate ligands may exhibit linkage isomers.^{60–63} By means of a “two-dimensional” approach to electron paramagnetic resonance (EPR) evaluation,⁶⁴ we have previously suggested the presence of linkage isomers in a number of copper(II) complex systems.^{65–69} This method defines EPR intensity as a function of the magnetic field, pH and the concentration of the metal complex. It furnishes the pertinent formation constants in the mass-balance equations together with the individual EPR parameters for all

^aDepartment of Inorganic and Analytical Chemistry, University of Szeged, Dóm tér 7, H-6720 Szeged, Hungary. E-mail: gyurcsik@chem.u-szeged.hu; Fax: +36-62-544-340; Tel: +36-62-544-335

^bPhD Program in Human Biology, School of Integrative and Global Majors, University of Tsukuba, Japan

^cResearch Centre for Natural Sciences, Hungarian Academy of Sciences, 1117 Budapest, Magyar tudósok körútja 2, Hungary

^dInstitute of Materials and Environmental Chemistry, Research Centre for Natural Sciences, Hungarian Academy of Sciences, 1117 Budapest, Magyar tudósok körútja 2, Hungary

^eDepartment of Physics, Budapest University of Technology and Economics and MTA-BME Lendület Spintronics Research Group (PROSPIN), P.O. Box 91 H-1521 Budapest, Hungary

^fDepartment of Physical Chemistry and Material Sciences, University of Szeged, Aradi Vértanúk tere 1, H-6720 Szeged, Hungary

†Electronic supplementary information (ESI) available: Tables and figures. See DOI: 10.1039/c7dt00884h



species simultaneously. Linkage isomers have also been studied by UV-Vis absorption,^{62,70} circular dichroism (CD),^{71–73} nuclear magnetic resonance (NMR)⁷⁴ spectroscopic investigations or applying multiple methods.⁷⁵ These isomers of kinetically labile metal complexes cannot be studied separately. The spectrum decomposition to obtain individual thermodynamic and spectral data is practically impossible due to the intrinsic limitation by the constant concentration ratios of the microspecies during the pH-dependent series of measurements. The most commonly applied method to explore such systems is the traditional way of selecting appropriate derivatives (mutants) to obtain basis limiting parameters for one or more isomers.

On the other hand, the ratio of the isomeric species can be varied by *e.g.* a change of temperature^{76–78} or photoirradiation.^{79–81} The conformational changes of the heat shock proteins exemplify such temperature dependent isomeric switches with a biological significance.^{82,83} There is, however, still no comprehensive study on solution microequilibria of labile coordination linkage isomers proving their presence by temperature-dependent multiple methods.

As a simple case we selected the His-Gly:Cu(II) = 1:1 system, where the predominant [CuL]⁺ complex at pH ~ 5.0 was suggested to exhibit two protonation isomers: {NH₂,N_{im}} histamine-type (isomer h) and {NH₂,N[–],COO[–]} peptide-type (isomer p) complexes (Fig. 1).⁸⁴ In this work we made an attempt to directly distinguish these two complex isomers by temperature dependent series of measurements. Their thermodynamic and spectral properties were determined by EPR, conventional and synchrotron radiation (SR)CD spectroscopy and differential scanning calorimetry (DSC) in the systems containing copper(II) and His-Gly or His-Ala dipeptides.

Experimental

Materials

Sodium and copper(II) perchlorate were from Fluka and Reachim. The latter solution was standardized complexometrically. pH-Metric titrations were performed by NaOH (Fluka) standard solution. The dipeptides were Sigma-Aldrich products. All the materials were used without further purification.

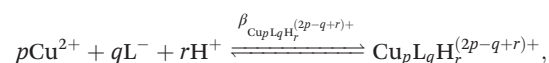
pH-Metric measurements

The protonation and coordination equilibria were investigated by potentiometric titrations in aqueous solution (*I* = 0.1 M

NaClO₄, *T* = 298.2 ± 0.1 K and 328.2 ± 0.1 K) under an argon atmosphere, using an automatic titration set including a PC controlled Dosimat 665 (Metrohm) autoburette and an Orion 710A precision digital pH-meter. The Metrohm Micro pH glass electrode (125 mm) was calibrated in aqueous solution *via* the modified Nernst equation:

$$E = E_0 + K \cdot \log[\text{H}^+] + J_{\text{H}} \cdot [\text{H}^+] + \frac{J_{\text{OH}} \cdot K_{\text{W}}}{[\text{H}^+]},$$

where *J_H* and *J_{OH}* are fitted parameters in acidic and alkaline media, respectively for taking into account the deviations from the Nernst equation due to the liquid junction potential and either the acidic or the alkaline errors of the glass electrode,⁸⁵ *pK_w* = 13.75 is the negative logarithm of the autoprotolysis constant of water at 298.2 K,⁸⁶ while the corresponding value at 328.2 K is 13.10.⁸⁷ The parameters were calculated by the non-linear least squares method. The complex formation was characterized by the general equilibrium process:



where L[–] denotes the non-protonated ligand molecule. The corresponding formation constants ($\beta(\text{Cu}_p\text{L}_q\text{H}_r^{(2p-q+r)+}) \equiv \beta_{pqr}$) were calculated using the PSEQUAD computer program.⁸⁸ The protonation constants were determined from three independent titrations (70–80 data points per titration) with the peptide concentration of (1.0–3.0) × 10^{–3} M. The complex formation constants were evaluated from three independent titrations (50–90 data points per titration) in the case of copper(II) containing systems, respectively. The applied ratio of the ligands and metal ions was 1:1 with the metal ion concentration of (1.0–3.0) × 10^{–3} M at the beginning of the titrations. The temperature range for the pH-metric titrations did not fully cover the range used for the EPR or CD experiments, 283.2–328.2 K for the former and 283.2–333.2 K for the latter. However, given the minimal change observed for the species distribution in the pH-potentiometric titrations over the 298.2–328.2 K range (Fig. S1†) it is safe to assume that there would be no significant change in the unexamined region.

Continuous wave-EPR measurements

EPR spectra were recorded with a Bruker EleXsys X-band spectrometer (microwave frequency 9.81 GHz, microwave power 10 mW, modulation amplitude 5 G, modulation frequency 100 kHz). The [CuL]⁺ complex of His-Gly and for comparison the [CuLH_{–1}] complex of Gly-Gly were obtained as major species in equimolar aqueous solutions of the components at 5 mM copper(II) and ligand concentration, the pH of which were adjusted to 5.05 and 7.12, respectively (*I* = 0.1 M NaClO₄). 100 μl solution of each complex was transferred to a quartz EPR tube and the spectra were recorded between 283.2–328.2 K in steps of 5.0 K and at 77 K, respectively. The temperature was adjusted by a liquid nitrogen based temperature controller system with an accuracy of ±0.1 K.

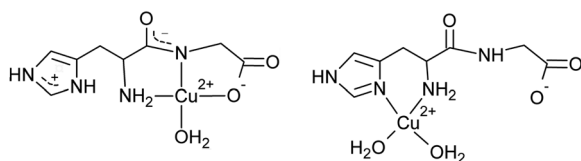


Fig. 1 Peptide-type (left) and histamine-type (right) coordination in the linkage isomers of [CuL]⁺ complex of His-Gly (L).



Circular dichroism measurements

The Vis-CD spectra were recorded on a Jasco J-815 spectropolarimeter in the wavelength interval from 300 to 800 nm with 0.5 nm increments in a cell with 1 cm optical path length. The synchrotron radiation CD (SRCD) spectra of the free ligand and the metal complexes were recorded at the SRCD facility at the UV1 beamline⁸⁹ on the storage ring ASTRID at the Institute for Storage Ring Facilities (ISA), University of Aarhus, Denmark. The light passed from the synchrotron through a CaF₂ window into a CD instrument purged constantly with nitrogen. In the instrument an initial linear polarization is converted into alternating circularly polarized light with a CaF₂ photo-elastic modulator (PEM, model I/CF50, Hinds, USA) operating at 50 kHz. The signal is detected with a photo-multiplier tube (PMT, 9402B, Electron Tubes, UK) using a lock-in amplifier. All spectra were recorded with 1 nm steps and a dwell time of 2 s per step, using 0.1 mm quartz cells (SUPRASIL, Hellma GmbH, Germany). The spectra were recorded in the wavelength range of 170–330 nm. Camphor-sulfonic acid served as a calibration material for the instruments. The substances were dissolved in distilled water and the pH was adjusted by HClO₄ and NaOH solutions, for final metal ion and peptide concentration of $\sim 5.0 \times 10^{-3}$ M ($I = 0.1$ M NaClO₄). The temperature was controlled by a built in Peltier unit. From raw spectra the water baseline was subtracted.

Microcalorimetric measurements

The calorimetric data were recorded on a Mettler-Toledo 822° differential scanning calorimeter. Known quantities of the samples (~ 10 μ l) were placed in the sample holder (~ 120 μ l medium pressure stein steel crucibles sealed with the O-ring). The same amount of the reference material was prepared in the same way. The difference of the amount of heat was recorded (*i.e.* DSC scanning) as the function of temperature in the range of 303.2–373.2 K with the heating rate of 1.0 K min^{−1}. In the samples the concentrations of Cu(ClO₄)₂ and NaClO₄ were 0.01958 M and 0.1990 M, respectively, while the concentration of His-Ala was 0.02283 M. The reference samples contained only NaClO₄ with the concentrations of 0.2186 M or 0.1990 M.

Data evaluation

The series of temperature dependent EPR spectra were simulated by the “two-dimensional” simulation program EPRTEMP.⁹⁰ The program fits the isotropic EPR parameters of the components derived for 273.2 K (g_0 , A_0 copper hyperfine coupling, a_N nitrogen superhyperfine couplings) and the relaxation parameters α , β , γ , which define the linewidths in the equation $\sigma_{M_I} = \alpha + \beta M_I + \gamma M_I^2$, where M_I denotes the magnetic quantum number of copper nucleus. Since natural copper(II) chloride was used for the measurements, the calculated spectra were composed from the spectra of ⁶³Cu and ⁶⁵Cu by taking into account the ratio of hyperfine couplings according to the magnetic moments and the respective components were weighed by their natural abundances. The copper (referring to ⁶³Cu) and nitrogen hyperfine couplings and relaxation para-

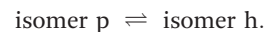
eters are given in field dimensions (gauss [G] = 10^{−4} T). The EPR parameters at a given temperature $Q(T)$ can be calculated by a power expansion containing no more than four terms:

$$Q(T) = \sum_{n=0}^3 Q_n (T - T_0)^n,$$

where $T_0 = 273.2$ K, Q_0 is the value at 273.2 K and Q_n ($n = 1-3$), the coefficients that can be fitted to describe the temperature dependence of $Q(T)$. The thermodynamic parameters ΔS and ΔH were also fitted. The details of the fitting used for the investigated systems are described in the EPR Measurements section.

For each spectrum, the noise-corrected regression parameter (R_j for the j th spectrum) is derived from the average square deviation (SQD) between the experimental and the calculated intensities. For the series of spectra, the fit is characterized by the overall regression coefficient R , calculated from the overall average SQD. The R value was 0.9965 for the series of His-Gly and 0.9970 for the Gly-Gly temperature dependent EPR spectra. The details of the statistical analysis were published previously.^{64,67,90}

The isomer ratios were calculated by the van't Hoff relationship: $\ln K = \frac{\Delta S}{R} - \frac{\Delta H}{RT}$. In the equation, K is the isomerization stability coefficient at the temperature given, *i.e.*, K equals to the ratio of the concentrations of histamine and the peptide type complex species. ΔH and ΔS are the reaction enthalpy and entropy for the formation of the histamine-type complex, respectively:



The same van't Hoff relationship combined with the mass-balance equations was applied for the evaluation of the CD, SRCD and calorimetric data. The Zita program package was applied for the latter calculations.⁹¹

Matrix rank analysis was performed by the MRA program.⁹²

Results and discussion

pH-Metric titrations

In principle, the shift in microscopic equilibria between the coordination isomers can be monitored by temperature dependent spectroscopic measurements. The calculation of the individual spectra of the expected isomers from these data is only straightforward, if the distribution of the macrospecies is essentially unaffected during these experiments. This was verified by pH-potentiometric titrations of the equimolar copper(II)–His-Gly system at 298.2 and 328.2 K. The evaluation of the titration curves demonstrated that the [CuL]⁺ complex was dominant at pH ~ 5.0 at both temperatures (Fig. S1†).

EPR measurements

The chemical exchange between the isomeric species is slow on the EPR time-scale and thus the EPR spectra of microspecies can be fitted by the superimposition of isotropic spectra



of the respective species. The averaged EPR spectroscopic parameters (g_0 , A_0 , copper hyperfine coupling and α , β , γ relaxation parameters) can be used to describe the individual spectrum at a certain temperature. The temperature dependence of these parameters can be taken into account by a power expansion (see the Data evaluation section). A reference spectral series were first measured to determine the minimum required number of the coefficients necessary for the description of the temperature-dependent EPR spectra. The $[\text{CuLH}_{-1}]$ complex of Gly-Gly dipeptide was selected with $\{\text{NH}_2, \text{N}^-, \text{COO}^-\}$ peptide type coordination being the predominant species at pH ~ 7 .⁶⁷ This type of coordination is expected for the isomer p of the His-Gly $[\text{CuL}]^+$ complex, too. Simulations and parameter fitting procedures revealed that the linear dependence of g_0 , A_0 and α , β parameters with fixed values for the nitrogen superhyperfine couplings and γ relaxation parameter was sufficient for the description of the temperature dependent spectra (Fig. S2†). The calculated parameters are shown in Table 1.

The linear temperature dependence of the above parameters was taken into account in the simulation of the superimposed EPR spectra for both components of the His-Gly $[\text{CuL}]^+$ complex. Our temperature-dependent pH-potentiometric titrations showed that the $[\text{CuL}]^+$ complex was dominant at pH ~ 5.0 , with only a small percent of the $[\text{CuLH}]^{2+}$ and $[\text{Cu}_2\text{L}_2\text{H}_{-2}]$ complexes present. The EPR spectrum of $[\text{CuLH}]^{2+}$ is very similar to the spectrum of the histamine-type $[\text{CuL}]^+$ isomer, and the spectrum of the dimer $[\text{Cu}_2\text{L}_2\text{H}_{-2}]$ complex is a broad singlet, therefore, the new well resolved component with EPR parameters close to those of Gly-Gly $[\text{CuLH}_{-1}]$ could only be considered as a peptide-type linkage isomer of $[\text{CuL}]^+$. The temperature dependent spectral series were then fitted by taking into account the two microspecies of the $[\text{CuL}]^+$ complex (Table 1 and Fig. 2). The coordination modes in Gly-Gly $[\text{CuLH}_{-1}]$ and His-Gly $[\text{CuL}]^+$ peptide-type complexes are the same, but slight differences in their EPR parameters were observed owing to the presence of the His side-chain in the latter complex, which modifies the electron density at the donor atoms of the ligand and the rotation correlation time, as well. By this approach we could obtain more reliable parameters for the minor species as compared to

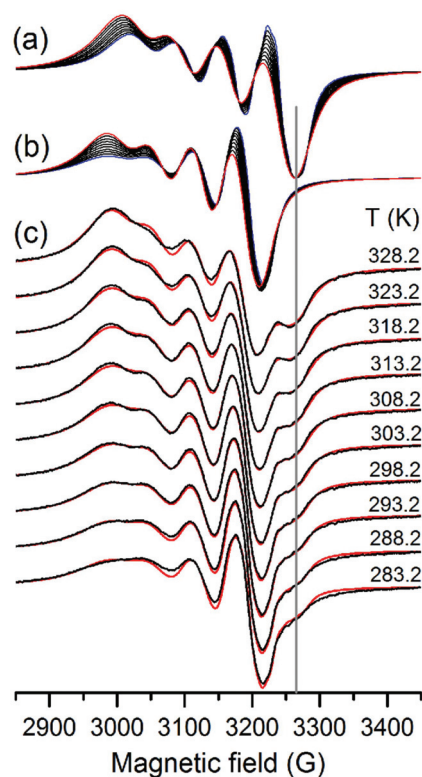


Fig. 2 Temperature dependent EPR spectra calculated for (a) peptide- and (b) histamine-type isomer of the His-Gly $[\text{CuL}]^+$ complex at pH = 5.05. Spectra were calculated at 283.2 K (blue), at 328.2 K (red) and in between (black). (c) Comparison of measured (black) and simulated (red) EPR spectra. A vertical line helps to follow the appearance of the sharpest line of the peptide-type isomer.

our earlier results ($g_0 = 2.1323$, $A_0 = 54.5$ G, $a_{\text{N1}} = 14.0$ G and $a_{\text{N2}} = 13.0$ G).⁸⁴ The EPR parameters of the predominant histamine-type isomer are in good accordance with previously determined data,⁸⁴ as well as, with those obtained for the histamine $[\text{CuL}]^{2+}$ complex ($g_0 = 2.1436$, $A_0 = 63.4$ G, $a_{\text{N1}} = 12.7$ G and $a_{\text{N2}} = 11.4$ G)⁹³ supporting the hypothesized type of coordination in this isomer. This model resulted in a good

Table 1 Isotropic EPR parameters of Gly-Gly $[\text{CuLH}_{-1}]$ and two isomers of His-Gly $[\text{CuL}]^+$ complexes. The temperature dependence of parameters was characterized by the $Q(T) = Q_0 + Q_1(T - 273.2)$ linear equation, where T is the temperature in K units and Q_0 is the parameter value at 273.2 K. The confidence intervals of the last digit (3σ) at a significance level of 99.7% are given in parentheses

	L = GG		L = HG			
			Isomer p		Isomer h	
	Q_0	$Q_1/^\circ$	Q_0	$Q_1/^\circ$	Q_0	$Q_1/^\circ$
g_0	2.1202(1)	$-5.1(5) \times 10^{-4}$	2.115(1)	$1.3(5) \times 10^{-4}$	2.1437(5)	$6.8(1) \times 10^{-5}$
A_0/G	67.2(2)	-0.007(6)	63(1)	0.04(3)	60.4(3)	-0.053(3)
a_{N1}/G	14.1(2)	—	14(1)	—	12.5(6)	—
a_{N2}/G	11.7(2)	—	14(1)	—	11.5(6)	—
α/G	14.7(2)	0.153(1)	21(2)	0.24(8)	34.1(9)	-0.08(2)
β/G	-6.7(1)	0.072(2)	-10(1)	0.06(4)	-16.6(4)	0.15(1)
γ/G	0.8(2)	—	2(1)	—	1.9(2)	—



agreement between the measured and simulated EPR spectra (Fig. 2c).

At first sight, the temperature dependence of the parameters provided surprising results. The higher the temperature the lower the bond strength and thus, the increase of the g_0 and decrease of the A_0 values are expected. Indeed, for g_0 this was the case for the two His-Gly complex isomers but not for the $[\text{CuLH}_{-1}]$ complex of Gly-Gly. We may resolve this apparent contradiction by the analysis of the equation $g = g_e - \frac{\alpha^2 n \lambda}{\Delta E}$ (where α is the molecular orbital coefficient, n is the quantum mechanical coefficient, λ is the spin-orbit coupling and ΔE is the energy difference between the ground state and the excited states), g_0 depends on the ratio of the spin-orbit coupling and the separation of the energy levels. We may assume that at elevated temperature the decrease of the spin-orbit coupling, as the consequence of more diffuse molecular orbitals, can exceed the effect of the decrease in the separation of energy levels. Accordingly, the g_0 value may decrease with an increase in temperature. The temperature dependence of the A_0 value is in addition, connected with the Fermi contact term related to the 3d–4s orbital mixing.⁹⁴ For the “histamine-type” isomer of the His-Gly complex A_0 decreases but for the “peptide-type” species A_0 increases upon increase of the temperature. We assume that a slightly different symmetry distortion of the molecular orbitals may influence the 3d–4s orbital mixing in a different manner.

From the temperature dependence of the isomer ratio (see Table S1† and Fig. 3) the standard enthalpy and entropy changes of the isomer equilibrium could be determined as $\Delta H = -21.4 \text{ kJ mol}^{-1}$ and $\Delta S = -62 \text{ J mol}^{-1} \text{ K}^{-1}$ with the standard errors of 0.4 kJ mol^{-1} and $1 \text{ J mol}^{-1} \text{ K}^{-1}$, respectively. Deviations could not be correctly calculated due to the unknown correlation values. The thermodynamic data show that the higher temperature is favourable for peptide-amide deprotonation, while the side-chain coordination becomes predominant at low temperature.

The EPR spectrum of the His-Gly $[\text{CuL}]^+$ complex recorded in frozen solution at 77 K showed characteristic features of a

dimer copper(II) complex formation (Fig. S3†), but distinct from that of the $[\text{Cu}_2\text{L}_2\text{H}_{-2}]$ complex.⁸⁴ This indicates that the macroscopic equilibrium shifts under such conditions, and the anisotropic EPR spectrum does not provide further insight into the equilibrium of the histamine- and peptide-type linkage isomers of the $[\text{CuL}]^+$ complex.

CD measurements in the wavelength range of the visible light

Our initial CD measurements in the equimolar copper(II) His-Gly system yielded too small a deviation between the spectra recorded at 293.2 and 333.2 K under conditions of the isomer formation (Fig. S4†). The reason for this is that the C-terminal Gly residue of the ligand is optically inactive thus, the transmission of the ligand optical activity to the copper(II) chromophore is ineffective.^{95,96} As the quantitative evaluation of these spectra would be ambiguous, we applied the His-Ala dipeptide with a chiral amino acid at its C-terminus in further CD investigations. The methyl side chain of alanine does not influence the coordination properties towards the copper(II) ion. Thus, the equilibrium constants, *i.e.* the species distribution, are essentially the same as in the copper(II)–His-Gly system.^{97–99} The CD pattern of this system changed substantially within the 283.2–333.2 K temperature range (Fig. 4a). It can also be seen that the spectrum recorded at a low temperature is similar to those of the copper(II) complexes with histamine-type, *i.e.* $\{\text{NH}_2, \text{N}_{\text{im}}\}$ coordination⁹⁶ in agreement with the EPR measurements. At the same time, on increasing the temperature the negative band around 650 nm becomes more pronounced. This band is characteristic of the copper(II) complexes with peptide-type $\{\text{NH}_2, \text{N}^-, \text{COO}^-\}$ coordination.⁹⁵ Thus, the ratio of the two isomers clearly changes: the complexation of the chelating backbone atoms including the deprotonated amide nitrogen is favoured at elevated temperature against the side-chain type coordination.

The Gly-Leu dipeptide containing a chiral amino acid with non-coordinating side-chain at the C-terminus was selected for comparison. The CD spectrum of its copper(II) complex was recorded at pH 7.0, where the $\{\text{NH}_2, \text{N}^-, \text{COO}^-\}$ coordinated peptide-type $[\text{CuLH}_{-1}]$ species dominates in the solution.^{97,99} The temperature change in the same range as for the His-Ala complex did not significantly affect the CD pattern (Fig. 4b). This suggests that the temperature change, and in parallel the eventual shift of the conformational population of the bound ligand molecule had no or minor influence on the Cotton effect obtained in the wavelength range that is characteristic of d–d transitions. This is also reflected by the success of the matrix rank analysis of the temperature dependent CD spectral series of the copper(II)–His-Ala system. The MRA program⁹² was able to fit the data by hypothesizing the presence of only two species in the solution (Fig. S5†).

Together with the pH metric results on the validity of macroscopic speciation, these observations support that the change of the CD pattern in the copper(II)–His-Ala system is indeed due to the shift of the microequilibria upon the change of the temperature. Thus, the CD data obtained in the copper(II)–His-Ala system as a function of the temperature were used to fit

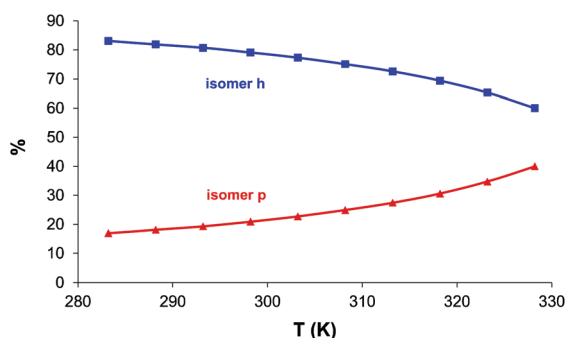


Fig. 3 The temperature dependence of the ratio of the histamine and peptide type isomers of the $[\text{CuL}]^+$ complex of His-Gly, according to the calculations based on the change of the EPR spectra.



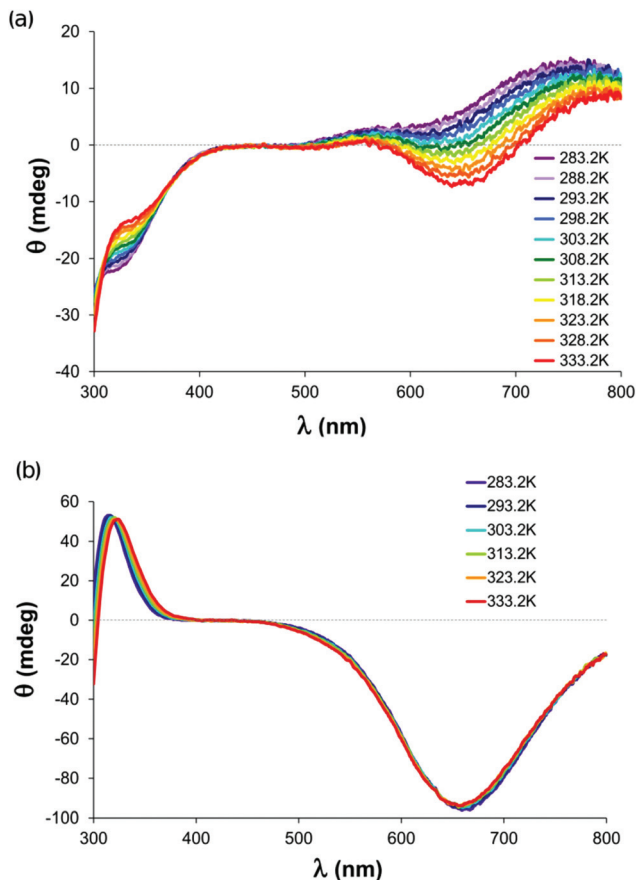


Fig. 4 Temperature dependent CD spectra recorded in the 300–800 nm wavelength range for equimolar systems of copper(II) and (a) His-Ala with the $[\text{CuL}]^+$ complex dominating at pH = 5.00, (b) Gly-Leu with the peptide-type $[\text{CuLH}_{-1}]$ complex dominating at pH = 7.00 in the equilibrium system. The copper(II) ion concentration was $\sim 5.0 \times 10^{-3}$ M in a cuvette with 1 cm optical path length.

the thermodynamic data by non-linear parameter estimation. For the fitting procedure, the previously mentioned van't Hoff equation, the Beer-Lambert law and the mass-balance equations were applied. Fitting the CD data for the isomerization of the $[\text{CuL}]^+$ complex resulted in a good agreement between the measured and simulated spectra (Fig. S6†). Together with ΔH and ΔS , the individual molar ellipticities of the two isomers were also obtained (Fig. 5).

The molar spectrum of one of the isomers corresponds well to those published previously for monohistamine-type copper(II) complexes ($\lambda_{\text{max}} = 746\text{--}752$ nm, $\Delta\epsilon = 0.09\text{--}0.11$ $\text{M}^{-1}\text{cm}^{-1}$).⁹⁶ The spectrum of the other isomer resembles the $[\text{CuLH}_{-1}]$ complexes of Cu(II) Gly-Ala dipeptide ($\lambda_{\text{min}} = 650$ nm, $\Delta\epsilon = -0.35$ $\text{M}^{-1}\text{cm}^{-1}$)¹⁰⁰ and the Ala-rich tetrapeptides ($\lambda_{\text{min}} = 685$ nm, $-\Delta\epsilon = 0.24\text{--}0.32$ $\text{M}^{-1}\text{cm}^{-1}$)¹⁰¹ with $\{\text{NH}_2, \text{N}^-, \text{CO}\}$ type of coordination, as well as that of the Gly-Leu complex, although with smaller intensity. Thus, the calculated spectra can be assigned to the “histamine-type” and “peptide-type” isomers of the $[\text{CuL}]^+$ complex of His-Ala, respectively. The calculated ΔH and ΔS values for the formation of isomer h

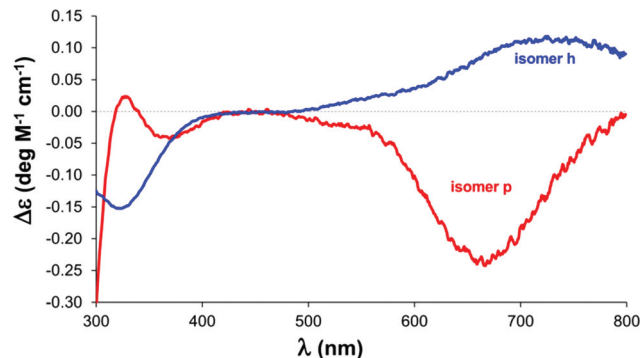


Fig. 5 The calculated molar CD spectra for the $[\text{CuL}]^+$ isomers of His-Ala. The spectrum of the histamine-type isomer is in blue, while that of the peptide-type isomer is in red.

were (-22.9 ± 3.5) kJ mol^{-1} and (-65 ± 11) $\text{J mol}^{-1}\text{K}^{-1}$, respectively in accordance with the EPR result for the copper(II)-His-Gly system. The relatively high deviation values arose from the fact that thermodynamic parameters cannot inherently be determined more accurately. The obvious explanation of this statement is shown in Fig. 6.

The temperature range of the detectable ellipticity change is about 300 K. Accurate determination of the influencing parameters would require the investigation of this whole temperature range to get sufficient information about the shape of the $\theta(T)$ curves. However, only a small part of this range is experimentally achievable in aqueous solutions, leading to large correlations between the parameters. Nevertheless, the above values are in agreement with those calculated from the EPR data.

SRCD measurements

Previous SRCD measurements showed that solutions of small peptides show a characteristic and pH sensitive CD pattern in the far UV wavelength region.¹⁰² This observation can be explained in terms of the unique peptide conformation popu-

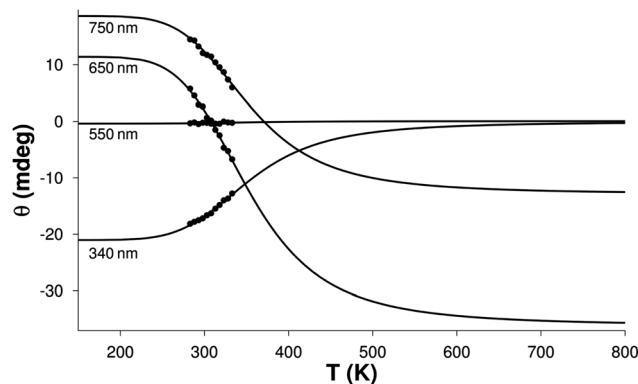


Fig. 6 The measured (filled circles) and the calculated (solid lines) ellipticity values of the $[\text{CuL}]^+$ complex of His-Ala as a function of temperature at four different wavelengths. The copper(II) ion concentration was $\sim 5.0 \times 10^{-3}$ M in a cuvette with 1 cm optical path length.



lation in each of the different protonation states. The metal ion coordination also greatly affects the spectra through emerging charge transfer transitions and by changing the ligand conformation population. Therefore, we expected that the change in the coordination type in the isomeric equilibrium will also have a significant effect on the spectra, and carried out temperature dependent SRCD measurements with His-Gly, His-Ala and Gly-Leu as well as with their copper(II)-complexes in the 283.2–333.2 K range, at pH 5.07 for the first two dipeptides and at 7.00 for the latter, respectively. The series of the SRCD spectra for His-Gly and its $[\text{CuL}]^+$ complex are depicted in Fig. 7, and those measured for His-Ala and Gly-Leu are included in the ESI (Fig. S7†).

While the spectra were recorded in the 170–330 nm wavelength range, the plots were reduced to the 175–330 nm range, as below 175 nm the absorption of the distilled water already resulted in maximum high tension voltage at the photomultiplier unit, causing the data to be unreliable (Fig. S8†). The minimum wavelength limit of the maximum high tension was typically between 176–178 nm (Fig. S9†) and only the CD data obtained above the limiting values were taken into account in the evaluation process.

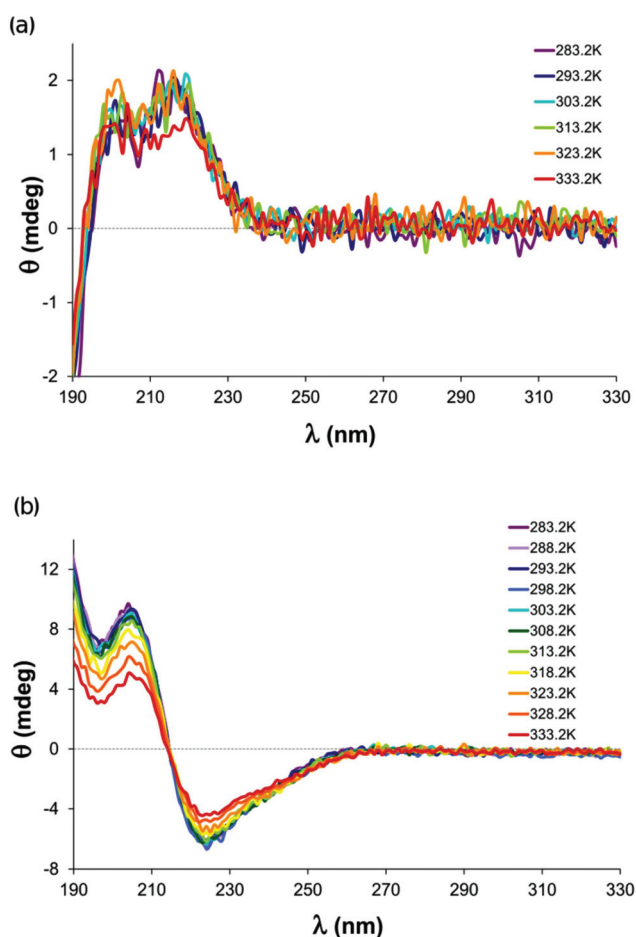


Fig. 7 Temperature dependent SRCD spectra recorded (a) for the His-Gly dipeptide and (b) for its $[\text{CuL}]^+$ complex at pH = 5.00 in the equilibrium system. The optical path length was 0.1 mm.

Generally, the spectra of the free ligands differ from those of the metal containing systems at all temperatures examined. While only slight variation of the SRCD spectra can be observed within the series recorded for the His-Gly or His-Ala free ligands, the spectra of their $[\text{CuL}]^+$ complexes exhibit more pronounced temperature dependent changes. On the other hand, the extent of the spectral variation upon temperature change is similar in the case of the free form and the copper(II)-complex of Gly-Leu peptide. As no linkage isomers of this peptide can form in its $[\text{CuLH}_{-1}]$ complex, the modest temperature-dependent spectral variations reflect only the increased flexibility of the molecule at elevated temperatures. Taken together, this indicates that the shift of the coordination isomer microequilibrium has a major contribution to the conformational changes of the ligands in copper(II)-His-Gly or His-Ala complexes.

The results of the MRA calculations on the temperature dependent SRCD spectral series obtained for the metal complexes are shown in Table S2.† It can clearly be seen that the first two diagonal elements are significant in comparison with their standard deviation values for the His-Gly and His-Ala complexes, while there is only one diagonal element of this kind for the copper(II)-Gly-Leu system. This again supports the presence of the isomeric species in the former complexes. The detailed analysis of the residual curves (Fig. S10†) revealed that none of the above systems can be perfectly interpreted with the MRA program, indicating that there is a continuous change in the shape of the spectra of individual species as a function of the temperature. The chiral effect leading to the observed SRCD spectra stems from the sum of the inherent configurational chirality and the contribution of the linkage and ligand conformational isomers. All of these may simultaneously change with temperature, increasing the complexity of the data analysis. No common algorithm is available yet to handle the SRCD data by an appropriate quantum and physico-chemical approach, similar to that applied above for the EPR spectra. The development of such a program would, however, be of great importance, as it could provide additional information on the ligand conformation in its complexed form in aqueous solutions.

Microcalorimetric experiments

The isomerization enthalpy was calculated from the differential scanning calorimetric data by the combination of the van't Hoff equation and the basic energy conservation equations. The repeated experiments led to the $-\Delta H = (19\text{--}27) \text{ kJ mol}^{-1}$ range for the formation of the h isomer from the p isomer. This is in agreement with the values determined by spectroscopic methods, although, this range seems wide as it was the case for the CD experiments, too. Limited data are available in the literature for isomeric equilibria. An example is the *cis* to *trans* isomer conversion of *N*-phosphoryl thioureas, where similar $-\Delta H = (13\text{--}15) \text{ kJ mol}^{-1}$ values were obtained.¹⁰³

The negative value in our system reveals that the conversion of the $\{\text{NH}_2, \text{N}^-, \text{COO}^-\}$ peptide-type copper(II) complex to its $\{\text{NH}_2, \text{N}_{\text{im}}\}$ histamine-type linkage isomer is an exothermic



process. This can be explained by the fact that the protonation of the backbone amide group is favoured at pH \sim 5, taken that its basicity is much higher compared to the imidazole side-chain nitrogen. Accordingly, the formation of peptide-type coordination mode in the reaction of Gly-Gly with copper(II) was shown to be slightly endothermic ($1.6\text{--}2.8\text{ kJ mol}^{-1}$).¹⁰³ In addition, the positive mesomeric effect of the imidazole ring increases the electron density on the nitrogen donor group, strengthening the copper(II)–N_{im} bond, as demonstrated by the negative standard reaction enthalpy related to the formation of the copper(II)–histamine [CuL]²⁺ complex (-54.3 kJ mol^{-1}).¹⁰⁴

Conclusions

Our analysis of temperature dependent spectroscopic data showed direct evidence for the existence of the peptide- and histamine-type linkage-isomers of His-Gly and His-Ala [CuL]⁺ complexes, followed by their characterization – without applying close derivatives of the ligands. According to the results of the EPR and CD measurement, the histamine-type complex ($\sim 80\%$) is predominant at room temperature but its amount decreased with the increase of the temperature, and the percentage of the peptide-type complex could reach 40% at 328.2 K. The thermodynamic parameters (*i.e.* the standard enthalpy and entropy changes) of the isomerisation process – determined by both calorimetric and spectroscopic methods – revealed essentially the same numerical values with similar uncertainty. Based on these results, we can discuss the behaviour of the isomers. The strong binding of the imidazole nitrogen donor group to the copper(II) ion lowers the enthalpy of the histamine-type complex. On the other hand, the tridentate coordination in the case of the peptide-type isomer results in the higher number of freely moving atoms in the uncoordinated histidine side-chain, and the release of an additional water molecule from the coordination sphere of the copper(II) ion, leading to the entropy increase. Thus, the conversion of a peptide-type isomer of [CuL]⁺ into a histamine-type linkage isomer seems to be promoted by the negative standard reaction enthalpy at low temperatures, but the opposite reaction is favourable at high temperatures due to the entropy increase.

The experimental methods for the detection, structural and thermodynamic characterization of microspecies in labile metal complex systems has to be carefully selected. EPR for paramagnetic complexes, NMR for diamagnetic ones, UV-Vis for those with a sensitive chromophore and CD for those possessing chirality is an obvious choice. In specific systems, the monocomplexes formed by each of the multiple binding sites offering the same donor atom set (*e.g.* $\{3 \times \text{N}^-, \text{N}_{\text{im}}\}$ for copper(II) in certain proteins) can be considered as linkage isomers.^{71–73,75} In such cases CD spectroscopy can perform better than EPR because it is sensitive to the differences in the chiral environment provided by the amino acid side chains. Another advantage of the CD spectroscopic measurements carried out in the wavelength range of the d–d transitions is that the spectra of single species (isomers) are not sensitive to

the temperature change, allowing for a simple evaluation of the data. The CD measurements in the UV range could be more generally performed for all complexes containing chiral ligands (most of the bioligands). By developing a common algorithm to parametrize and fit these spectra, not only the presence of the isomers, but also the conformation of the complexed ligands could be monitored using this method, requiring minimal stoichiometric amounts of substances. Such experiments would complement NMR *e.g.* for the paramagnetic metal complexes.

With the forewarning in mind that the widest accessible temperature range in aqueous solutions is an inherent limitation of the experiments, our study shed light on the potential of temperature-dependent measurements by properly chosen spectroscopic methods to directly characterize linkage-isomers of kinetically labile metal complexes.

Acknowledgements

This work has received support through the Hungarian National Research Development and Innovation Office (Grants No. K120130, GINOP 2.3.2-15-2016-00038 and K119442) and the Hungarian Scientific Research Fund (OTKA No. K115762). The support of the European Union Research Infrastructure Action FP7 from the CALIPSO Programme (FP7/2007-2013, grant No. 312284) is also acknowledged. The authors thank László Janovák's help during the calorimetric measurements as well as Tamás Jakusch and Emrah Özel for helpful discussions.

References

- 1 P. Comba, G. N. DeJuliis, G. A. Lawrance, S. M. Luther, M. Maeder, A. L. Nolan, M. J. Robertson and P. Turner, *Dalton Trans.*, 2003, 2188–2193.
- 2 S. L. Dabb and N. C. Fletcher, *Dalton Trans.*, 2015, **44**, 4406–4422.
- 3 D. Furushou, T. Hashibe, T. Fujinami, K. Nishi, H. Hagiwara, N. Matsumoto, Y. Sunatsuki, M. Kojima and S. Iijima, *Polyhedron*, 2013, **52**, 1489–1498.
- 4 M. B. Rossi, P. Alborés and L. M. Baraldo, *Inorg. Chim. Acta*, 2011, **374**, 334–340.
- 5 S. K. Chawla, M. Arora, K. Nättinen and K. Rissanen, *Mendeleev Commun.*, 2006, **16**, 88–90.
- 6 A. J. Blake, N. R. Brooks, N. R. Champness, M. Crew, A. Deveson, D. Fenske, D. H. Gregory, L. R. Hanton, P. Hubberstey and M. Schröder, *Chem. Commun.*, 2001, 1432–1433.
- 7 M. Du, X.-J. Zhao, J.-H. Guo and S. R. Batten, *Chem. Commun.*, 2005, 4836–4838.
- 8 A. V. Ivanov, V. I. Mitrofanova, M. Kritikos and O. N. Antzutkin, *Polyhedron*, 1999, **18**, 2069–2078.
- 9 B. Noszá, W. Guo and D. L. Rabenstein, *J. Phys. Chem.*, 1991, **95**, 9609–9614.



- 10 M. Kraszni, Z. Szakács and B. Noszál, *Anal. Bioanal. Chem.*, 2004, **378**, 1449–1463.
- 11 G. Parkin, *Chem. Rev.*, 1993, **93**, 887–911.
- 12 M. Melnik and C. E. Holloway, *Coord. Chem. Rev.*, 2006, **250**, 2261–2270.
- 13 Y. Jean, A. Lledos, J. K. Burdett and R. Hoffmann, *J. Am. Chem. Soc.*, 1988, **110**, 4506–4516.
- 14 P. Gülich, H. A. Goodwin and D. N. Hendrickson, *Angew. Chem., Int. Ed. Engl.*, 1994, **33**, 425–427.
- 15 E. L. Hegg and J. N. Burstyn, *Coord. Chem. Rev.*, 1998, **173**, 133–165.
- 16 T. Zhang, M. Ozbil, A. Barman, T. J. Paul, R. P. Bora and R. Prabhakar, *Acc. Chem. Res.*, 2015, **48**, 192–200.
- 17 B. Noszál, D. Visky and M. Kraszni, *J. Phys. Chem. B*, 2006, **110**, 14507–14514.
- 18 T. N. Parac and N. M. Kostić, *J. Am. Chem. Soc.*, 1996, **118**, 5946–5951.
- 19 R. P. Bora, A. Barman, X. Zhu, M. Ozbil and R. Prabhakar, *J. Phys. Chem. B*, 2010, **114**, 10860–10875.
- 20 J. K. Bashkin, *Curr. Opin. Chem. Biol.*, 1999, **3**, 752–758.
- 21 J. Lee, A. Y. Kovalevsky, I. V. Novozhilova, K. A. Bagley, P. Coppens and G. B. Richter-Addo, *J. Am. Chem. Soc.*, 2004, **126**, 7180–7181.
- 22 B. S. Lim and R. H. Holm, *Inorg. Chem.*, 1998, **37**, 4898–4908.
- 23 E. Reisner, V. B. Arion, A. Ruffinowska, I. Chiorescu, W. F. Schmid and B. K. Keppler, *Dalton Trans.*, 2005, 2355–2364.
- 24 R. Cini, S. Defazio, G. Tamasi, M. Casolaro, L. Messori, A. Casini, M. Morpurgo and M. Hursthouse, *Inorg. Chem.*, 2007, **46**, 79–92.
- 25 G. Grasso and S. Bonnet, *Metallomics*, 2014, **6**, 1346–1357.
- 26 A. H. Krotz, L. Y. Kuo, T. P. Shields and J. K. Barton, *J. Am. Chem. Soc.*, 1993, **115**, 3877–3882.
- 27 M. T. Ma, H. N. Hoang, C. C. G. Scully, T. G. Appleton and D. P. Fairlie, *J. Am. Chem. Soc.*, 2009, **131**, 4505–4512.
- 28 B. Ding, Y. Y. Liu, Y. Q. Huang, W. Shi, P. Cheng, D. Z. Liao and S. P. Yan, *Cryst. Growth Des.*, 2009, **9**, 593–601.
- 29 A. M. Rich, E. Bombarda, A. D. Schenk, P. E. Lee, E. H. Cox, A. M. Spuches, L. D. Hudson, B. Kieffer and D. E. Wilcox, *J. Am. Chem. Soc.*, 2012, **134**, 10405–10418.
- 30 Y. Berezovskaya, C. T. Armstrong, A. L. Boyle, M. Porrini, D. N. Woolfson and P. E. Barran, *Chem. Commun.*, 2011, **47**, 412–414.
- 31 J. Hoang and R. S. Prosser, *Biochemistry*, 2014, **53**, 5727–5736.
- 32 M. A. Wilson and A. T. Brunger, *J. Mol. Biol.*, 2000, **301**, 1237–1256.
- 33 M. A. Schumacher, A. F. Rivard, H. P. Bächinger and J. P. Adelman, *Nature*, 2001, **410**, 1120–1124.
- 34 S. J. Philips, M. Canalizo-Hernandez, I. Yildirim, G. C. Schatz, A. Mondragón and T. V. O'Halloran, *Science*, 2015, **349**, 877–881.
- 35 C. C. Chang, L. Y. Lin, X. W. Zou, C. C. Huang and N. L. Chan, *Nucleic Acids Res.*, 2015, **43**, 7612–7623.
- 36 M. A. Wilson and A. T. Brunger, *Acta Crystallogr., Sect. D: Biol. Crystallogr.*, 2003, **D59**, 1782–1792.
- 37 U. Heinz, L. Hemmingsen, M. Kiefer and H. W. Adolph, *Chem. – Eur. J.*, 2009, **15**, 7350–7358.
- 38 E. Kopera, T. Schwerdtle, A. Hartwig and W. Bal, *Chem. Res. Toxicol.*, 2004, **17**, 1452–1458.
- 39 M. J. Tamás, S. K. Sharma, S. Ibstedt, T. Jacobson and P. Christen, *Biomolecules*, 2014, **4**, 252–267.
- 40 T. Jacobson, C. Navarrete, S. K. Sharma, T. C. Sideri, S. Ibstedt, S. Priya, C. M. Grant, P. Christen, P. Goloubinoff and M. J. Tamás, *J. Cell Sci.*, 2012, **125**, 5073–5083.
- 41 M. Nagaoka, J. Kuwahara and Y. Sugiura, *Biochem. Biophys. Res. Commun.*, 1993, **194**, 1515–1520.
- 42 M. a. Telpoukhovskaia and C. Orvig, *Chem. Soc. Rev.*, 2013, **42**, 1836–1846.
- 43 E. Gaggelli, H. Kozłowski, D. Valensin and G. Valensin, *Chem. Rev.*, 2006, **106**, 1995–2044.
- 44 P. Faller and C. Hureau, *Coord. Chem. Rev.*, 2012, **256**, 2127–2128.
- 45 M. J. Clarke, *Coord. Chem. Rev.*, 2003, **236**, 209–233.
- 46 A. M. Pizarro and P. J. Sadler, *Biochimie*, 2009, **91**, 1198–1211.
- 47 K. Mazák and B. Noszál, *J. Med. Chem.*, 2012, **55**, 6942–6947.
- 48 S. D. Tsotsoros, Y. Qu and N. P. Farrell, *J. Inorg. Biochem.*, 2015, **143**, 117–122.
- 49 X. Wang, H. Li, X. Du, J. Harris, Z. Guo and H. Sun, *Chem. Sci.*, 2012, **3**, 3206–3215.
- 50 J. Kasparkova, S. Pospisilova and V. Brabec, *J. Biol. Chem.*, 2001, **276**, 16064–16069.
- 51 V. B. Arion, E. Reisner, M. Fremuth, M. A. Jakupiec, B. K. Keppler, V. Y. Kukushkin and A. J. L. Pombeiro, *Inorg. Chem.*, 2003, **42**, 6024–6031.
- 52 A. C. G. Hotze, S. E. Caspers, D. De Vos, H. Kooijman, A. L. Spek, A. Flamigni, M. Bacac, G. Sava, J. G. Haasnoot and J. Reedijk, *J. Biol. Inorg. Chem.*, 2004, **9**, 354–364.
- 53 J. C. Chen, J. Li, L. Qian and K. C. Zheng, *J. Mol. Struct. (THEOCHEM)*, 2005, **728**, 93–101.
- 54 S. H. van Rijt and P. J. Sadler, *Drug Discovery Today*, 2009, **14**, 1089–1097.
- 55 F. S. Mackay, J. A. Woods, H. Moseley, J. Ferguson, A. Dawson, S. Parsons and P. J. Sadler, *Chem. – Eur. J.*, 2006, **12**, 3155–3161.
- 56 X. Ma, J. Jia, R. Cao, X. Wang and H. Fei, *J. Am. Chem. Soc.*, 2014, **136**, 17734–17737.
- 57 V. Brabec and O. Nováková, *Drug Resist. Updates*, 2006, **9**, 111–122.
- 58 U. Kalinowska-Lis, J. Ochocki and K. Matlawska-Wasowska, *Coord. Chem. Rev.*, 2008, **252**, 1328–1345.
- 59 H. Song, W. Li, R. Qi, L. Yan, X. Jing, M. Zheng and H. Xiao, *Chem. Commun.*, 2015, **51**, 11493–11495.
- 60 J. L. Burmeister, *Coord. Chem. Rev.*, 1968, **3**, 225–245.
- 61 T. G. Appleton, J. F. J. Pesch, M. Wienken, S. Menzer and B. Lippert, *Inorg. Chem.*, 1992, **31**, 4410–4419.
- 62 T. Kiss and A. Gergely, *Inorg. Chim. Acta*, 1983, **78**, 247–254.



- 63 M. Kato, K. Unoura, T. Takayanagi, Y. Ikeda, T. Fujihara and A. Nagasawa, *Inorg. Chem.*, 2013, **52**, 13375–13383.
- 64 A. Rockenbauer, T. Szabó-Plánka, Z. Árkosi and L. Korecz, *J. Am. Chem. Soc.*, 2001, **123**, 7646–7654.
- 65 M. Fainerman-Melnikova, T. Szabó-Plánka, A. Rockenbauer and R. Codd, *Inorg. Chem.*, 2005, **44**, 2531–2543.
- 66 R. Šípoš, T. Szabó-Plánka, A. Rockenbauer, N. V. Nagy, J. Šima, M. Melník and I. Nagypál, *J. Phys. Chem. A*, 2008, **112**, 10280–10286.
- 67 N. V. Nagy, T. Szabó-Plánka, A. Rockenbauer, G. Peintler, I. Nagypál and L. Korecz, *J. Am. Chem. Soc.*, 2003, **125**, 5227–5235.
- 68 N. V. Nagy, T. Szabó-Plánka, G. Tircsó, R. Király, Z. Árkosi, A. Rockenbauer and E. Brücher, *J. Inorg. Biochem.*, 2004, **98**, 1655–1666.
- 69 B. S. Creaven, E. Czeplédi, M. Devereux, É. A. Enyedy, A. Foltyn-Arfa Kia, D. Karcz, A. Kellett, S. McClean, N. V. Nagy, A. Noble, A. Rockenbauer, T. Szabó-Plánka and M. Walsh, *Dalton Trans.*, 2010, **39**, 10854–10865.
- 70 T. Kiss and A. Gergely, *J. Chem. Soc., Dalton Trans.*, 1984, 1951–1957.
- 71 M. Klewpatinond and J. H. Viles, *FEBS Lett.*, 2007, **581**, 1430–1434.
- 72 S. Timári, I. Turi, K. Várnagy and I. Sóvágó, *Polyhedron*, 2014, **79**, 72–79.
- 73 K. Ősz, *J. Inorg. Biochem.*, 2008, **102**, 2184–2195.
- 74 T. Gajda, B. Henry and J.-J. Delpuech, *J. Chem. Soc., Perkin Trans. 2*, 1994, 157–164.
- 75 L. Hong, T. M. Carducci, W. D. Bush, C. G. Dudzik, G. L. Millhauser and J. D. Simon, *J. Phys. Chem. B*, 2010, **114**, 11261–11271.
- 76 R. R. Garipov, V. G. Shtyrlin, D. A. Safin, Y. I. Zyavkina, F. D. Sokolov, A. L. Konkin, A. V. Aganov and A. V. Zakharov, *Chem. Phys.*, 2006, **320**, 59–74.
- 77 T. Gajda, B. Gyurcsik, T. Jakusch, K. Burger, B. Henry and J.-J. Delpuech, *Inorg. Chim. Acta*, 1998, **275–276**, 130–140.
- 78 N. Hasani and A. Eslami, *Polyhedron*, 2015, **85**, 412–428.
- 79 P. Coppens, I. I. Vorontsov, T. Graber, A. Y. Kovalevsky, Y. S. Chen, G. Wu, M. Gembicky and I. V. Novozhilova, *J. Am. Chem. Soc.*, 2004, **126**, 5980–5981.
- 80 P. Coppens, I. Novozhilova and A. Kovalevsky, *Chem. Rev.*, 2002, **102**, 861–883.
- 81 D. Schaniel, T. Woike, N. R. Behrnd, J. Hauser, K. W. Krämer, T. Todorova and B. Delley, *Inorg. Chem.*, 2009, **48**, 11399–11406.
- 82 S. Lee, T. Carlson, N. Christian, K. Lea, J. Kedzie, J. P. Reilly and J. J. Bonner, *Mol. Biol. Cell*, 2000, **11**, 1753–1764.
- 83 S. D. Westerheide, R. Raynes, C. Powell, B. Xue and V. N. Uversky, *Curr. Protein Pept. Sci.*, 2012, **13**, 86–103.
- 84 T. Szabó-Plánka, N. V. Nagy, A. Rockenbauer and L. Korecz, *Inorg. Chem.*, 2002, **41**, 3483–3490.
- 85 F. J. C. Rosotti and H. Rosotti, *The determination of stability constants*, McGraw-Hill Book Co., New York, 1962.
- 86 E. Högfeldt, in *Stability Constants of Metal-Ion Complexes*, Pergamon, New York, 1982, p. 32.
- 87 M. Whitfield, in *Chemical Oceanography*, ed. J. P. Riley and G. Skirrow, Academic, New York, 2nd edn, 1975, pp. 44–171.
- 88 L. Zékány, I. Nagypál and G. Peintler, Technical Software Distributors, Baltimore MD, 1991.
- 89 P. Limão-Vieira, A. Giuliani, J. Delwiche, R. Parafita, R. Mota, D. Duflo, J. P. Flament, E. Drage, P. Cahillane, N. J. Mason, S. V. Hoffmann and M. J. Hubin-Franskin, *Chem. Phys.*, 2006, **324**, 339–349.
- 90 A. Rockenbauer, N. V. Nagy, F. Le Moigne, D. Gimes and P. Tordo, *J. Phys. Chem. A*, 2006, **110**, 9542–9548.
- 91 G. Peintler, Zita, A Comprehensive Program Package for Fitting Parameters of Chemical Reaction Mechanisms, Versions 2.1–5.0, Department of Physical Chemistry, University of Szeged, Szeged, Hungary, 2012.
- 92 G. Peintler, I. Nagypál, A. Jancsó, I. R. Epstein and K. Kustin, *J. Phys. Chem. A*, 1997, **101**, 8013–8020.
- 93 T. Szabó-Plánka, A. Rockenbauer, L. Korecz and D. Nagy, *Polyhedron*, 2000, **19**, 1123–1131.
- 94 A. Rockenbauer, *J. Magn. Reson.*, 1979, **35**, 429–438.
- 95 B. Gyurcsik, I. Vosekalna and E. Larsen, *J. Inorg. Biochem.*, 2001, **85**, 89–98.
- 96 N. I. Jakab, B. Gyurcsik, T. Körtvélyesi, I. Vosekalna, J. Jensen and E. Larsen, *J. Inorg. Biochem.*, 2007, **101**, 1376–1385.
- 97 H. Sigel, *Inorg. Chem.*, 1975, **14**, 1535–1540.
- 98 H. Kozłowski, W. Bal, M. Dyba and T. Kowalik-Jankowska, *Coord. Chem. Rev.*, 1999, **184**, 319–346.
- 99 I. Sóvágó, in *Biocoordination Chemistry*, ed. K. Burger, Ellis Horwood, New York, 1990, pp. 135–184.
- 100 J. M. Tsangaris and R. B. Martin, *J. Am. Chem. Soc.*, 1970, **92**, 4255–4260.
- 101 G. Formicka-Kozłowska, H. Kozłowska, I. Z. Siemion, K. Sobczyk and E. Nawrocka, *J. Inorg. Biochem.*, 1981, **15**, 201–212.
- 102 J. Šebek, B. Gyurcsik, J. Šebestík, Z. Kejík, L. Bednárová and P. Bouř, *J. Phys. Chem. A*, 2007, **111**, 2750–2760.
- 103 L. A. Kochergina and A. V. Emel'yanov, *Russ. J. Phys. Chem. A*, 2015, **89**, 580–585.
- 104 A. Gergely and I. Sóvágó, *Inorg. Chim. Acta*, 1976, **20**, 19–25.

