

Title page

Title: Validity of the EQ-5D-5L and EQ-5D-3L in patients with Crohn's disease

Authors:

Fanni Rencz^{1,2}, Peter L. Lakatos^{3,4}, László Gulácsi¹, Valentin Brodszky¹, Zsuzsanna Kürti³, Szilvia Lovas⁵, János Banai⁶, László Herszényi⁶, Tamás Cserni^{1,7}, Tamás Molnár⁸, Márta Péntek^{1*}, Károly Palatka^{5*}

1- Department of Health Economics, Corvinus University of Budapest, Fővám tér 8. H-1093, Budapest, Hungary

2- Hungarian Academy of Sciences, Premium Postdoctoral Research Program, Nádor u. 7., H-1051 Budapest, Hungary

3- 1st Department of Medicine, Semmelweis University, Korányi Sándor u. 2/a, H-1083 Budapest, Hungary

4- Division of Gastroenterology, McGill University, MUHC, Montreal General Hospital, 1650 Ave. Cedar, D16.173.1, Montreal, QC, H3G 1A4, Canada.

5- Division of Gastroenterology, Department of Internal Medicine, University of Debrecen, Nagyerdei krt. 98. H-4032 Debrecen, Hungary

6- Medical Centre, Hungarian Defence Forces, Podmaniczky u. 109-111. H-1062 Budapest, Hungary

7- Faculty of Economics, Corvinus University of Budapest, Fővám tér 8. H-1093, Budapest, Hungary

8- 1st Department of Internal Medicine, University of Szeged, Korányi fasor 8-10. H-6720 Szeged, Hungary

*M. Péntek and K. Palatka have equally contributed to this work.

ORCID IDs:

Fanni Rencz: 0000-0001-9674-620X
Peter L. Lakatos: 0000-0002-3948-6488
László Gulácsi: 0000-0002-9285-8746
Valentin Brodszky: 0000-0002-6095-2295
Zsuzsanna Kürti: 0000-0001-8671-6576
László Herszényi: 0000-0002-7454-4401
Tamás Molnár: 000-0003-2571-3595
Márta Péntek: 0000-0001-9636-6012
Károly Palatka: 0000-0001-7924-7951

Compliance with Ethical Standards

Funding statement: None.

Conflict of interest: The authors declare that they have no conflict of interest.

Ethical standard: All procedures performed in studies involving human participants were in accordance with the ethical standards of the institutional and/or national research committee and with the 1964 Helsinki declaration and its later amendments or comparable ethical standards. The study protocol was approved by the National Scientific and Ethical Committee of Hungary (Reference No. 49548-4/2016/EKU).

Informed consent: Informed consent was obtained from all participants included in the study.

Acknowledgment: This research was supported by the Higher Education Institutional Excellence Program of the Ministry of Human Capacities in the framework of the 'Financial and Public Services' research project (1783-3/2018/FEKUTSTRAT) at Corvinus University of Budapest. FR is a postdoctoral research fellow at the Hungarian Academy of Sciences (MTA-BCE PPD 462025). TC's work was supported by the New National Excellence Programme of the Ministry of Human Capacities of Hungary (ÚNKP-17-2-II-BCE-38). The authors are

grateful to Drs Lóránt Gönczi, Eszter Schäfer, Tamás Szamosi, Ferenc Zsigmond and Marianna Rutka for their contribution to the data collection.

Corresponding author:

Fanni Rencz MD, MSc, PhD

Department of Health Economics

Corvinus University of Budapest

Address: Fővám tér 8., H-1093 Budapest, Hungary

E-mail: fanni.rencz@uni-corvinus.hu

Abstract

Purpose: The EuroQol five-dimension questionnaire (EQ-5D) is the most commonly used instrument to obtain utility values for cost-effectiveness analyses of treatments for Crohn's disease (CD). We aimed to compare the measurement properties of the two adult versions of EQ-5D (EQ-5D-3L and EQ-5D-5L) in patients with CD.

Methods: Between 2016 and 2017, a multicentre cross-sectional survey was carried out. Consecutive outpatients with CD completed the 3L, 5L and EQ visual analogue scale (VAS). Disease severity was graded by the Crohn's Disease Activity Index (CDAI) and Perianal Disease Activity Index (PDAI). The 3L and 5L were compared in terms of feasibility, agreement, ceiling effect, redistribution properties, discriminatory power, convergent and known-groups validity.

Results: 206 patients (54.9% male, mean age 35 ± 11 y) participated in the survey. For 3L, 25 unique health states were observed versus 59 for the 5L. The overall ceiling effect decreased from 29.6% (3L) to 25.5% (5L). Absolute discriminatory power improved (mean Shannon index 0.84 vs. 1.18). The 3L correlated stronger with EQ VAS and CDAI scores, whereas the 5L with PDAI. The 5L demonstrated a better known-groups validity on the basis of age, perianal fistulas, extraintestinal manifestations and disability.

Conclusions: This is the first study to report the impact of CD on quality of life using the EQ-5D-5L questionnaire. The 5L seems to perform better than 3L in terms of feasibility, ceiling effect, discriminatory power and known-groups validity. Understanding the differences in psychometrics between the 3L and 5L is essential as they have substantial implications for financial decision-making about CD treatments.

Keywords:

Crohn's disease; health-related quality of life; EQ-5D; psychometrics

Introduction

Crohn's disease (CD) is a chronic inflammatory disorder of the gastrointestinal tract affecting over 2 million people in Europe [1,2]. Patients with CD may present a broad spectrum of symptoms including diarrhea, abdominal pain, rectal bleeding, fever, fatigue and mental problems [3]. Over time complications such as strictures, fistulas, abscesses and extraintestinal manifestations (e.g. arthritis, uveitis/iritis or skin inflammation) may develop in up to 50% of CD patients [3,4]. The chronic relapsing nature of the disease has a detrimental impact on patients' health-related quality of life (HRQoL) [5]

In the past 15 years, the introduction of biological drugs has revolutionised the treatment of CD. Biologics are costly alternatives compared to conventional treatments; thus, evidence on their cost-effectiveness is required for reimbursement decisions [6-9]. In many countries including the US, Canada, Australia, the UK, France, Belgium, the Netherlands, Spain, Hungary and Poland, the EuroQol five-dimension questionnaire (EQ-5D) is among the preferred tools to measure HRQoL for cost-effectiveness analyses by national health technology assessment agencies [10-17]. So far, the EQ-5D has been used in a number of cost-effectiveness analyses of biologics and biosimilars to value the health gains from treatment [18-22]. According to a recent systematic literature review, the EQ-5D is the most frequently applied generic preference-based measure of HRQoL in CD patients [23].

Two versions of the EQ-5D were developed for use on adult populations, the EQ-5D-3L (hereafter 3L) in 1990 and the EQ-5D-5L (hereafter 5L) in 2011 [24]. Nearly 20 studies in CD, involving observational studies and randomised controlled trials [23], applied the 3L version, for which validity and reliability had been demonstrated in this patient population [25,26]. The 5L, an expanded version of the 3L, was introduced by the EuroQol Group with the intention of reducing ceiling effects and improving discriminatory power [27,28]. A number of studies have

confirmed the improved psychometric properties of the 5L in both general population and patient samples, including cancer, chronic hepatic diseases, diabetes, osteoarthritis, psoriasis and stroke [29]. No studies have reported on HRQoL in patients with CD as assessed by the 5L, and only two published clinical trial protocols, planning to use the 5L questionnaire in CD patients, are present [30,31]. Nevertheless, as of the time this manuscript was written, results are not yet available.

Given the growing number of biological and biosimilar treatments available for CD [7,9,32] an increased use of the 5L is expected in the years to come. Understanding the differences in psychometrics between the 3L and 5L is essential as they might have substantial implications for clinical and financial decision-making. Therefore, the objective of the current study is to assess the validity of the 5L and to compare its measurement properties to that of the 3L in the same set of patients with CD. We aim to test the following psychometric properties: feasibility, agreement, ceiling effect, redistribution properties, discriminatory power, convergent and known-groups validity.

Materials and methods

Study design and patient population

Between October 2016 and September 2017, a multicentre, cross-sectional survey was conducted at three academic gastroenterology departments and an inflammatory bowel diseases centre in three large cities (Budapest, Debrecen and Szeged) in Hungary. Consecutive outpatients over 18 years of age diagnosed with CD were enrolled. The survey comprised of a paper-based questionnaire, first part of which was completed by the patients, and the second by their gastroenterologist. Patients were asked about socio-demographic characteristics, general health status and HRQoL. Gastroenterologists provided data about medical history, clinical

characteristics, disease severity and treatments. Permission for conducting the study was granted by the National Scientific and Ethical Committee of Hungary (Reference No. 49548-4/2016/EKU). All patients signed an informed consent form before collection of any data.

Measures

All patients completed a set of questionnaires including the validated Hungarian versions of the 5L, 3L, EQ visual analogue scale (VAS), Patients' Global Assessment VAS (PGA VAS), Patients' Global Assessment on fistula symptoms VAS, a pain VAS and a worst pain experienced in the past 3 months VAS.

EQ-5D-3L and EQ-5D-5L questionnaires

The EQ-5D is a generic, self-reported measure of current health that consists of a five-item descriptive system and a visual analogue scale (EQ VAS) [33,34]. The descriptive system has two versions, namely the 3L and 5L, both involving five health dimensions (mobility, self-care, usual activities, pain/discomfort and anxiety/depression). The EQ VAS records the patient's current self-rated health on a 20-cm-long vertical scale ranging from 0 ('The worst imaginable health state') to 100 ('The best imaginable health state').

In each dimension of the 3L version, subjects may choose from three response levels (no problems=1, some/moderate problems=2, extreme problems/unable to/confined to bed=3) allowing to define a total of 3^5 (=243) unique health states. In the 5L the response levels are expanded to five categories in each dimension (no problems=1, slight problems=2, moderate problems=3, severe problems=4 and unable to/extreme problems=5) providing 5^5 (=3125) distinct health states. It is worthy of note that the wording of levels is standardised in the 5L

[27]. The intermediate level is consistently ‘moderate’ in all dimensions of the 5L, and the worst level of mobility has been changed from ‘confined to bed’ (3L) to ‘unable to walk about’ (5L). In the Hungarian EQ-5D, another amendment was made when switching from the 3L to the 5L in order to be harmonized with other language variants, the label of ‘anxiety/depression’ was reworded, ‘szorongás/lehangoltság’(=anxiety/feeling blue) in the 3L was replaced by ‘szorongás/depresszió’ (=anxiety/depression) in the 5L [35]. In accordance with earlier studies, the 5L preceded the 3L in the questionnaire, in order to prevent the underuse of level 2 and 4 on the 5L [36]. To avoid duplication in data collection, the EQ VAS was completed only once (right after the 5L descriptive system).

The EQ-5D responses may be converted into an EQ-5D index score (utility value) reflecting social preferences for each specific health state [37]. In absence of national value sets in Hungary, the 3L value set for the UK by *Dolan* [38] and the 5L value set for England by *Devlin et al.*[39] were applied in this study to derive EQ-5D index scores. The major reason for this choice was that the UK/English value set is recommended to use in countries with no national tariffs [14]. In these value sets, the ‘11111’ descriptive health state equals to 1 (full health), whilst the two worst health states, the ‘33333’ in the 3L and the ‘55555’ in the 5L correspond to -0.594 and -0.285, respectively [38,39].

Crohn's Disease Activity Index (CDAI)

The CDAI is a widely used outcome measure to evaluate disease activity in patients with CD [40]. It is primarily based on an eight-item list of clinical symptoms or laboratory findings in the past seven days, including the number of liquid or soft stools per day, abdominal pain, general well-being, presence of extraintestinal manifestations, treatment with antidiarrheal drugs, presence of an abdominal mass, haematocrit and body weight. Total score is calculated

by physicians as a sum of products of the items multiplied by weighting factors. CDAI total scores range from 0 to 600, where a higher score represents worse disease activity. Established cut-offs are as follows: <150 non-active disease or remission, 150-219 mildly active, 220-449 moderately active and 450-600 severely active disease [41].

Perianal disease Activity Index (PDAI)

PDAI is a validated scoring system to evaluate severity of perianal fistulising CD [42]. The PDAI includes five items (i.e. discharge, pain/restriction of activities, restriction of sexual activity, type of perianal disease and degree of induration), each of them is rated on a five-point scale ranging from no symptoms (=0) to severe symptoms (=4). Total PDAI score varies between 0 and 20, where a higher score indicates a more severe disease. PDAI of ≤ 4 identifies inactive disease requiring no therapy, whereas a PDAI of >4 suggests active disease [43].

Visual analogue scales

To assess disease severity and fistula-related disease severity the Patient's Global Assessment (PGA) VAS, and Patients' Global Assessment on fistula symptoms VAS (0-100) were administered, both providing a range of scores from 0-100, where 0 indicated 'not severe at all' and 100 represented 'very severe'.

The current and worst CD-related pain intensities experienced by the patients in the past three months were recorded on a horizontal VAS with the endpoints of 'no pain at all' (=0) and 'pain as bad as it could be' (=100) [44].

Statistical analyses

Data analysis was performed according to the criteria proposed in previous studies attempting to compare the measurement properties of the 3L and 5L in other populations [36,45-47].

Feasibility

We computed the proportion of patients not answering to a few (i.e. partially incomplete questionnaire) or all dimensions (i.e. incomplete questionnaire) of the EQ-5D. Feasibility was compared by calculating the percentage of missing values for all dimensions of the 3L and 5L.

Agreement

The agreements among the 3L and 5L EQ-5D index scores were examined using an intraclass correlation coefficient (ICC) and a Bland-Altman plot. A two-way random model with absolute agreement was applied to obtain an ICC value [48]. Agreement is considered poor for ICC values between 0 and 0.39, fair between 0.40 and 0.59, good between 0.60 and 0.74 and excellent between 0.75 and 1 [49]. The Bland-Altman plot shows the differences between 3L and 5L index scores (y-axis) and the means of these scores (x-axis) [50].

Ceiling effect

The proportion of patients reporting ‘no problems’ was calculated for each dimension of the descriptive system. We also computed the proportion of patients reporting ‘no problems’ in all five dimensions (11111 vector). We assumed that the ceiling effect would be lower for 5L compared with 3L suggesting a better discriminatory power of the 5L version. We estimated the absolute and relative reduction when going from 3L to 5L. The relative reduction (%) was computed as:

$$\frac{ceiling_{3L} - ceiling_{5L}}{ceiling_{3L}} \times 100$$

Redistribution properties

Redistribution properties were defined as proportions of 3L-5L response pairs in each dimension from the same patient [36]. We computed the percentage of consistent and inconsistent 3L-5L response pairs as well as the average size of inconsistency for each dimension. A response pair was considered inconsistent when a 3L response was two or more levels away from the 5L response; for example, in any dimension, a patient marks level 1 in the 3L but level 3 in the 5L version. The mean size of inconsistency was calculated according to the following weights: 0 = responses differ by a maximum of one level (i.e. consistent response pair), 1 = responses differ by two levels, 2 = responses differ by three levels and 3 = responses differ by four levels [36].

Discriminatory power

One may hypothesise that the 5L with its two extra levels has a better discriminatory potential (informativity). However, the discriminatory power improves only if the new levels are effectively used. To test this, we calculated Shannon and Shannon Evenness indices for each dimension separately [51,52]. The Shannon index (H') was defined as:

$$H' = - \sum_{i=1}^L p_i \log_2 p_i$$

where L denotes the number of levels in a dimension of the descriptive system, and p_i is the proportion of observations in the i th level ($i = 1, \dots, L$). The optimal amount of information is captured when the responses are evenly distributed across levels (i.e. rectangular distribution).

In this case, H' reaches its maximum value at $\log_2 L$ which equates to 1.58 for the 3L and 2.32 for the 5L. The higher the H' , the more information is obtained and the better the discriminatory power is.

The Shannon Evenness index (J'), combines the evenness (rectangularity) of a distribution and the number of levels used. J' was calculated by using the following formula:

$$J' = \frac{H'}{H'_{\max}}, \text{ where } H'_{\max} = \log_2 L.$$

A higher J' of the 5L expresses a better discriminatory power, while a lower J' indicates a loss in potential of the 5-level dimensions compared to the 3L.

Convergent and known-groups validity

Convergent validity of the EQ-5D dimensions and index scores with EQ VAS, CDAI, PDAI, PGA VAS, PGA fistula VAS, pain VAS and worst pain VAS was tested by Spearman's rank order correlations. The correlation coefficient (r_s) was interpreted as follows: very weak correlation $r_s < 0.2$, weak correlation $0.20 \leq r_s < 0.4$, moderate correlation $0.4 \leq r_s < 0.6$ and strong correlation $0.6 \leq r_s \leq 1$ [53]. Known-groups validity was evaluated for age groups and all relevant clinical characteristics. We hypothesised that patients with older age, more severe disease, perianal fistulas, extraintestinal manifestations, disability or permanent stoma have lower EQ-5D index scores. Wilcoxon signed-rank test was applied to test the difference between 3L and 5L index scores across these groups, whereas Mann-Whitney U or Kruskal Wallis H tests were used to assess between-group differences in the 3L and 5L. All the statistics were two-sided, and $p < 0.05$ was considered statistically significant. Data were analysed by using IBM SPSS 22.0. Armonk, NY: IBM Corp (2013).

Results

Patient characteristics

A total of 206 eligible patients with CD completed the survey (Table 1). The majority of the sample were men (54.9%), and the mean age was 34.7 years (range 18-70). Mean disease duration was 10.5 (SD 6.3) years. At the time of the survey, 41% had a fistulising disease, and approximately one-third of these had active perianal fistula(s). Extraintestinal manifestations were present in 27.7% of cases. Among the patients, 66% received biological therapy: infliximab (46.6%), adalimumab (17.5%) and vedolizumab (1.9%). There were 10 (4.9%) patients in the sample with a permanent stoma. According to CDAI scores, three-quarter of the patients were in symptomatic remission. Mean disease severity, global assessment and pain scale scores are described in Table 1.

Feasibility

No questionnaires were returned blank, but there were three and two partially incomplete 3L and 5L descriptive systems, respectively. In all but one cases, the number of missing answers per patient was only one. There were no missing values on the EQ VAS.

Agreement

Overall, a good agreement was observed between the 3L and 5L (ICC=0.707, 95% CI 0.363-0.844; $p<0.0001$). Mean 3L index scores were significantly lower compared to the 5L

(0.80 ± 0.20 and 0.87 ± 0.12 ; $p < 0.0001$). The Bland-Altman plot confirmed the good level of agreement between the two measures (Fig.2). Differences between index scores tended to increase at lower mean values.

Distribution and ceiling effect

For 3L, 25 unique health states were observed versus 59 for the 5L. Distribution of EQ-5D index scores is presented in Fig.1. There were two negative values in the 3L and none in the 5L.

Patients reported the least problems with self-care (rate of '1' responses: 94.7% in 3L and 94.1% in 5L), whereas the most problems occurred with pain/discomfort (rate of '1' responses: 43.7% in 3L and 38.3% in 5L) (Table 2). The other three dimensions varied in between. The proportion of '11111' profiles (index score=1) decreased from 29.6% on the 3L to 25.5% on the 5L indicating an overall absolute ceiling effect reduction of 4.1% and a relative ceiling effect reduction of 13.3%. Absolute and relative ceiling effect reductions were the highest for the mobility and the lowest for the anxiety/depression item. There were a total of nine (4.4%) '100' responses on the EQ VAS.

Redistribution properties and inconsistencies

Cross-tabulations of responses to the 3L and 5L showed that responses covered all levels for both EQ-5D versions (Table 3). No 3L responses were more than two levels away from their 5L response pairs. Only 24 (2.3%) response pairs did not meet the criteria for consistency, and these were given by 21 (10.2%) patients. The average size of overall inconsistency was very low (1.0). The lowest rate of inconsistent responses was observed in mobility and self-care

dimensions (0.5%), whereas the highest in the pain/discomfort and anxiety/depression dimensions (3.9%) (Table 4).

Discriminatory power

When moving from 3L to 5L, absolute discriminatory power (Shannon index, H') improved across all dimensions (3L 0.30 to 1.06 vs. 5L 0.37 to 1.65) indicating that the extra levels were effectively used (Table 4). The average H' value improved from 0.84 for the 3L to 1.18 for the 5L. Relative discriminatory power (Shannon Evenness index, J') marginally increased for the dimension of pain/discomfort, while declined for the other four dimensions. The average values of J' for the 3L and 5L were 0.53 and 0.51, respectively.

Convergent validity

With respect to index scores, the 3L and 5L produced a strong and a moderate-to-strong correlation with EQ VAS, respectively (Table 5). The 3L indicated better correlations with EQ VAS for all dimensions except for anxiety/depression. For individual dimensions, the minimum value of correlation coefficient was found for self-care (-0.096) and the maximum for usual activities (-0.568). In contrast, in 5L, correlation coefficients with EQ VAS ranged from -0.091 (self-care) to -0.525 (pain/discomfort).

For both EQ-5D versions, very weak correlations were observed with CDAI scores across all dimensions, with a better overall performance of the 3L. As opposed to these, in all but one dimensions the 5L provided stronger correlations with PDAI and in all dimensions with PGA VAS, PGA fistula VAS and current pain VAS. Considering the worst pain experienced in the

past 3 months, the 5L exhibited a better convergent validity for the usual activities, pain/discomfort and anxiety/depression domains.

Known-groups validity

The mean and median of 5L were higher than the corresponding mean and median of 3L in all subgroups of patients (Table 6). Subjects with extraintestinal manifestations and those who were disabled due to CD tended to have significantly lower index scores, as measured by both instruments ($p < 0.05$). The 5L was able to better distinguish between groups based on age, perianal fistulas and permanent stoma.

Discussion

This study aimed to compare the psychometric properties of two versions of the EQ-5D questionnaire in a sample of patients diagnosed with CD. A good agreement was found between the two instruments, albeit, one might expect higher ICC value than 0.707, given the same underlying construct. In comparison, ICC values of 0.759 and 0.94 were reported in a young adult general population in Portugal and among patients with psoriasis in Greece, respectively [56,57]. In accordance with earlier studies, the Bland-Altman plot confirmed a strong agreement between the two measures [56,57].

One of the primary aims in introducing the 5L was to reduce the number of patients with 11111 (full health) responses. As expected, the expansion of the response levels in the EQ-5D descriptive system decreased ceiling effect, especially in the pain/discomfort and usual activities dimensions. The proportion of CD patients reporting no problems declined by 4.1%. This is similar to the magnitude of reduction in ceiling effect observed in chronic hepatic

diseases (2.9%) and psoriasis (4.2%) [54,35]. Nevertheless, it is considerably smaller compared to those found in patients with hepatitis B (16.7%) and diabetes (20.0%) [55,58].

According to a recent systematic review by *Buchholz et al.* 14 previous studies involving various patient or general population samples have analysed the informativity of the 5L and 3L by computing Shannon indices [29]. In all of these studies, the H' was higher for the 5L than for the 3L indicating that more information is captured by the 5L. The J' was, however, higher for the 5L in nine studies and slightly lower in five studies – similarly to our study in patients with CD. A possible explanation for this is the very limited use of levels 4 and 5 in the 5L and level 3 in the 3L because of the high number of patients in remission or with mildly active disease.

With regard to convergent and known-groups validity with the reference measures, some differences were identified between the 3L and 5L. In our study the 5L performed better in 24 out of the 35 correlation coefficients (69%). This figure is in accordance with previous studies in which some disease-specific outcome measures correlated better with the 5L, while others with the 3L. For example, the 5L demonstrated slightly better convergence validity with Psoriasis Area and Severity Index but not with the Dermatology Life Quality Index (DLQI) in psoriasis [35], with the Eastern Cancer Oncology Group (ECOG) and the European Organisation for Research and Treatment of Cancer Quality of Life Questionnaire Core 30 (EORTC QLQ 30) scales in cancer [60], and none of Barthel Index and modified Rankin scale in stroke [61]. We observed that the 5L exhibited weaker correlations with EQ VAS in CD (4/5 dimensions). For the sake of comparison, the 5L produced higher correlation coefficients in patients with hepatitis B (4/5 dimensions) [55], cancer (5/5 dimensions) [60] and total hip arthroplasty (4/5 dimensions) [62], but not in psoriasis (1/5 dimension) [35]. The underlying reasons for such differences may be attributed to the variations in patient populations including the characteristics and severity of the disease, and the extent of use of response levels on the

EQ-5D descriptive system by patients with different conditions. In terms of known-groups validity, the 5L was able to more precisely detect differences between subgroups of patients based on age and important clinical characteristics. Both versions detected significantly lower EQ-5D index scores in patients with extraintestinal manifestations. As mentioned previously, arthritis/arthritis has represented the majority of these extraintestinal symptoms which can be relatively easily captured by the mobility dimension of the EQ-5D.

As opposed to patient-reported scales, both systems showed weak or very weak correlations with measures of disease severity assessed by physicians (CDAI and PDAI). Previous studies found moderate or strong correlations between the 3L index and CDAI scores [25,26,63]. This difference may be attributable to variations in the composition of patient populations examined in these studies (e.g. disease characteristics and severity, type of treatment). Other sources of difference lie in the time horizon of the EQ-5D and CDAI (today vs. previous seven days), the interobserver variability [64] and the accuracy of CDAI score calculation. The CDAI is based on symptoms, signs and blood test results, and studies reported that a poor correlation exists between CDAI scores and endoscopic indices [65-67]. Consequently, the weak correlation between the EQ-5D and CDAI does not imply that the EQ-5D can poorly distinguish severity groups of CD patients.

Large systematic differences between 3L and 5L index scores can be observed, which are resulting from how individuals respond to the changed descriptive system and from the differences between the 3L (UK) and the 5L (English) value sets [68,69]. As shown in a recent study by *Hernández Alava et al.* the 3L and 5L utilities are not interchangeable, as they can produce substantially different cost-effectiveness results [70]. To put this into context, biological treatments for CD mostly improve HRQoL, rather than reducing mortality; thus, a drug would be deemed as more cost-effective if the 3L had been used in place of the 5L.

Examining how the differences between the 3L and 5L results impact existing cost-effectiveness analyses of biologics and biosimilars might be an important future challenge.

The multicentre design that involved four clinics from three different cities, the heterogeneous patient population and the large number of outcome measures utilised in the survey can be considered as strengths of the study. This is the first study in the literature to compare the measurement properties of the 3L and 5L in CD patients; additionally, the first to report the impact of CD on HRQoL using the 5L version of the questionnaire.

The greatest limitation of the study is that patients in severe health states were underrepresented in the sample, mostly because two-third of our patients were treated with biologics. Nonetheless, the patient population was heterogeneous in terms of clinical manifestation of the disease, which was excellent for the purpose of study. A further limitation of our study is the moderate sample size. Finally, we did not test some other important psychometric properties such as sensitivity and test-retest reliability, which could not be investigated here because of the cross-sectional nature of the survey.

In conclusion, in patients with CD, the 5L performed well in terms of feasibility, agreement, ceiling effect, consistency, absolute discriminatory power and known-groups validity. Nonetheless, it somewhat lagged behind the 3L in convergent validity with EQ VAS and CDAI. Further longitudinal studies are needed that compare the responsiveness and reliability of the two descriptive systems. Another future research direction is to examine the relationship of EQ-5D index scores and endoscopic markers that might better reflect disease severity than CDAI scores.

Tables

Table 1 Patient characteristics

	Mean (SD) or n (%)
Gender	
Female	93 (45.1%)
Male	113 (54.9%)
Age (years)	34.7 (10.5)
Employment status[§]	
Student	25 (12.1%)
Full-time employed	110 (53.4%)
Part-time employed	30 (14.6%)
Unemployed	11 (5.3%)
Retired	3 (1.5%)
Disabled due to Crohn's disease	49 (23.8%)
Other	15 (7.3%)
Disease duration (years) (missing n=1)	10.5 (6.3)
Fistulas[§]	84 (40.8%)
Perianal	84 (40.8%)
Other	2 (1.0%)
Extraintestinal manifestations[§]	57 (27.7%)
Arthritis/arthralgia	44 (21.4%)
Iritis/uveitis	8 (3.9%)
Skin symptoms	8 (3.9%)
Other [†]	3 (1.5%)
Permanent stoma	10 (4.9%)
Treatments	
None	3 (1.5%)
Systemic non-biological	67 (32.5%)
Biological	136 (66.0%)
Outcome measures	
<i>Disease severity</i>	
CDAI (0-600) (missing n=2)	110.49 (76.97)
PDAI (0-20) (missing n=1)	3.68 (2.29)
PGA VAS (0-100) (missing n=2)	50.11 (23.87)
PGA fistula VAS (0-100) (missing n=11)	44.87 (25.72)
<i>Pain</i>	
Pain VAS (0-100)	24.65 (23.90)
Worst pain experienced in the past 3 months VAS (0-100)	41.95 (31.36)
<i>Health-related quality of life*</i>	
EQ-5D-5L (-0.285-1) (missing n=2)	0.87 (0.12)
EQ-5D-3L (-0.594-1) (missing n=3)	0.80 (0.17)
EQ VAS (0-100)	72.74 (19.67)

§ Combinations occurred. † Vasculitis, aphthous stomatitis and primary sclerosing cholangitis were present in one patient each. *We found two negative values for the EQ-5D-3L and no negative values for the EQ-5D-5L. CDAI = Crohn's Disease Activity Index; PDAI = Perianal disease Activity Index; PGA VAS = Patients' Global Assessment visual analogue scale; PGA fistula VAS = Patients' Global Assessment on fistula symptoms visual analogue scale; VAS = visual analogue scale.

Higher scores represent worse health state for all outcome measures with the exception of EQ-5D-3L, EQ-5D-5L and EQ VAS.

Table 2 Ceiling effects

Dimension	3L (n, %)	5L (n, %)	Ceiling effect reduction	
			Absolute	Relative (%)
Mobility	168 (81.6%)	161 (78.5%)	3.02%	4.17%
Self-care	195 (94.7%)	192 (94.1%)	0.54%	1.54%
Usual activities	129 (62.9%)	119 (57.8%)	5.16%	7.75%
Pain/discomfort	90 (43.7%)	79 (38.3%)	5.34%	12.22%
Anxiety/depression	118 (57.8%)	118 (57.3%)	0.56%	0.00%
Overall (11111)	60 (29.6%)	52 (25.5%)	3.60%	13.33%

Table 3 Redistribution properties from 3L to 5L: cross tabulation of dimension scores (n, %)

3L	Dimension	5L				
		1	2	3	4	5
1	Mobility	160 (95.2%)	8 (4.8%)	0 (0.0%)	0 (0.0%)	0 (0.0%)
	Self-care	191 (98.5%)	3 (1.5%)	0 (0.0%)	0 (0.0%)	0 (0.0%)
	Usual activities	114 (88.4%)	14 (10.9%)	1 (0.7%)	0 (0.0%)	0 (0.0%)
	Pain/discomfort	74 (82.2%)	13 (14.4%)	3 (3.3%)	0 (0.0%)	0 (0.0%)
	Anxiety/depression	111 (94.1%)	5 (4.2%)	2 (1.7%)	0 (0.0%)	0 (0.0%)
2	Mobility	1 (2.7%)	26 (70.3%)	9 (24.3%)	1 (2.7%)	0 (0.0%)
	Self-care	1 (10.0%)	7 (70.0%)	1 (10.0%)	1 (10.0%)	0 (0.0%)
	Usual activities	5 (7.0%)	35 (48.6%)	30 (41.7%)	2 (2.7%)	0 (0.0%)
	Pain/discomfort	5 (4.4%)	70 (61.4%)	37 (32.5%)	2 (1.8%)	0 (0.0%)
	Anxiety/depression	6 (7.1%)	58 (69.1%)	20 (23.8%)	0 (0.0%)	0 (0.0%)
3	Mobility	0 (0.0%)	0 (0.0%)	0 (0.0%)	0 (0.0%)	0 (0.0%)
	Self-care	0 (0.0%)	0 (0.0%)	0 (0.0%)	0 (0.0%)	0 (0.0%)
	Usual activities	0 (0.0%)	0 (0.0%)	0 (0.0%)	2 (50.0%)	2 (50.0%)
	Pain/discomfort	0 (0.0%)	0 (0.0%)	0 (0.0%)	1 (50.0%)	1 (50.0%)
	Anxiety/depression	0 (0.0%)	0 (0.0%)	0 (0.0%)	2 (100.0%)	0 (0.0%)

There were altogether 24 (2.3%) inconsistent response pairs provided by 21 (10.2%) patients. The size of inconsistency is represented in grayscale with more inconsistency in darker fields [47].

Table 4 Inconsistency between the 3L and 5L versions and Shannon (H') and Shannon Evenness index (J')

Dimension	Patients (n)	Inconsistency		Shannon indices, 3L			Shannon indices, 5L		
		Inconsistent response pairs (n, %)	Average size of inconsistencies	n	H'	J'	n	H'	J'
Mobility	205	1 (0.5%)	1.00	206	0.73	0.46	205	0.94	0.41
Self-care	204	1 (0.5%)	1.00	206	0.30	0.19	204	0.37	0.16
Usual activities	205	6 (2.9%)	1.00	205	1.06	0.67	206	1.54	0.66
Pain/discomfort	206	8 (3.9%)	1.00	206	1.06	0.67	206	1.65	0.71
Anxiety/depression	204	8 (3.9%)	1.00	204	1.05	0.66	206	1.40	0.60
Total/mean	-	24 (2.3%)	1.00	-	0.84	0.53	-	1.18	0.51

Table 5 Convergent validity: Spearman's correlation coefficients

Dimension	EQ VAS		CDAI		PDAI		Patients' Global Assessment VAS (0-100)		Patients' Global Assessment on fistula symptoms VAS (0-100)		Pain VAS (0-100)		Worst pain experienced in the past 3 months VAS (0-100)	
	3L	5L	3L	5L	3L	5L	3L	5L	3L	5L	3L	5L	3L	5L
Mobility	-0.297*	-0.285*	-0.034	-0.028	0.044	0.132	0.192*	0.257*	-0.084	0.098	0.181*	0.193*	0.265*	0.262*
Self-care	-0.096	-0.091	0.047	0.055	0.146	0.165	0.113	0.160*	0.031	0.153	0.057	0.067	0.167*	0.158*
Usual activities	-0.568*	-0.523*	0.129	0.089	0.148	0.169	0.423*	0.449*	0.110	0.187	0.434*	0.442*	0.386*	0.454*
Pain/discomfort	-0.547*	-0.525*	0.188*	0.182*	0.226*	0.285*	0.401*	0.474*	0.116	0.308*	0.608*	0.652*	0.484*	0.584*
Anxiety/depression	-0.338*	-0.339*	0.126	0.153*	0.062	0.044	0.184*	0.248*	0.149	0.245*	0.201*	0.235*	0.227*	0.304*
EQ-5D index score	0.606*	0.575*	-0.175*	-0.144*	-0.208	-0.232*	-0.417*	-0.494*	-0.096	0.281*	-0.561	-0.539*	-0.499*	-0.570*

* $p < 0.05$ for all correlation coefficients.

Bold and italic values indicate a lower correlation coefficient of the 5L compared to the 3L.

CDAI = Crohn's Disease Activity Index; PDAI = Perianal disease Activity Index; PGA VAS = Patients' Global Assessment visual analogue scale; PGA fistula VAS = Patients' Global Assessment on fistula symptoms visual analogue scale; VAS = visual analogue scale.

Table 6 Known-groups validity

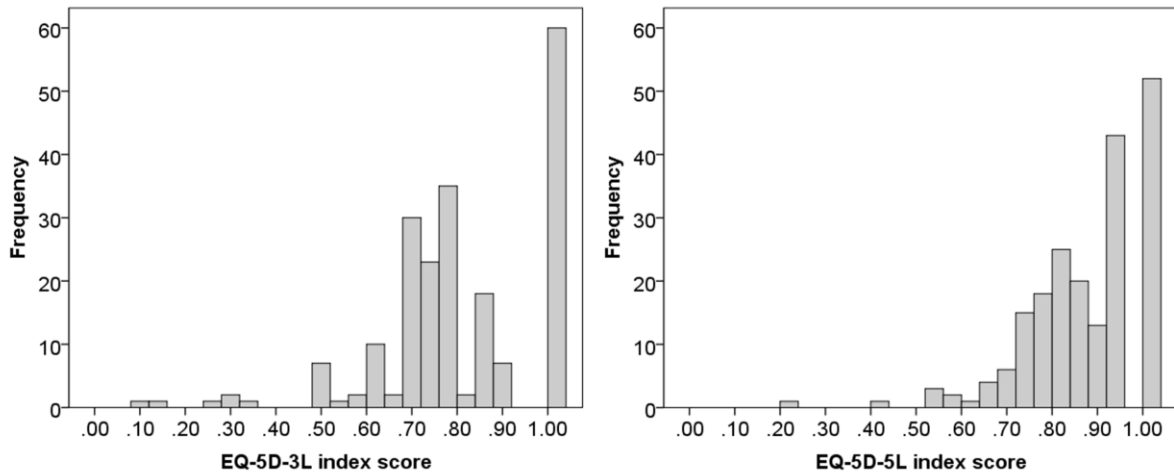
		5L			p-value [§]	3L			p-value [§]	Difference between 5L and 3L (mean, SD)
		n	Mean (SD)	Median (IQR)		n	Mean (SD)	Median (IQR)		
Total sample		204	0.87 (0.12)	0.90(0.80-1.00)	-	203	0.80 (0.17)	0.80(0.69-1.00)	-	0.07 (0.10)*
Age groups										
18-24		37	0.90 (0.10)	0.92 (0.81-1.00)	0.0357	37	0.83 (0.16)	0.81 (0.73-1.00)	0.1230	0.07 (0.09)*
25-34		71	0.89 (0.12)	0.92 (0.81-1.00)		71	0.82 (0.17)	0.77 (0.73-1.00)		0.07 (0.10)*
35-44		58	0.85 (0.12)	0.86 (0.77-0.94)		57	0.77 (0.19)	0.80 (0.69-0.94)		0.08 (0.10)*
≥45		38	0.84 (0.15)	0.85 (0.79-0.94)		38	0.78 (0.15)	0.74 (0.69-0.88)		0.06 (0.11)*
Perianal fistulas	yes	83	0.85 (0.13)	0.86 (0.78-0.94)	0.0889	81	0.78 (0.18)	0.80 (0.69-1.00)	0.2148	0.07 (0.11)*
	no	121	0.88 (0.12)	0.92 (0.81-1.00)		122	0.81 (0.17)	0.80 (0.69-1.00)		0.07 (0.09)*
Extraintestinal manifestations	yes	57	0.81 (0.10)	0.80 (0.74-0.87)	<0.0001	54	0.71 (0.14)	0.71 (0.68-0.80)	<0.0001	0.10 (0.09)*
	no	147	0.90 (0.12)	0.94 (0.83-1.00)		149	0.83 (0.17)	0.85 (0.73-1.00)		0.06 (0.10)*
Permanent stoma	yes	10	0.80 (0.14)	0.78 (0.69-0.93)	0.0737	10	0.75 (0.21)	0.69 (0.67-1.00)	0.2550	0.06 (0.16)
	no	194	0.87 (0.12)	0.92 (0.81-1.00)		193	0.80 (0.17)	0.80 (0.69-1.00)		0.07 (0.09)*
Disabled due to CD	yes	46	0.78 (0.12)	0.80 (0.74-0.86)	<0.0001	46	0.68 (0.14)	0.70 (0.61-0.76)	<0.0001	0.10 (0.11)*
	no	158	0.90 (0.11)	0.94 (0.83-1.00)		157	0.84 (0.16)	0.85 (0.73-1.00)		0.06 (0.09)*
Severity groups										
Symptomatic remission (CDAI<150)		154	0.88 (0.11)	0.92 (0.81-1.00)	0.1133	154	0.82 (0.15)	0.80 (0.69-1.00)	0.0651	0.06 (0.09)*
Mild (CDAI 150-219)		32	0.86 (0.14)	0.90 (0.79-0.99)		31	0.77 (0.21)	0.80 (0.69-1.00)		0.10 (0.10)*
Moderate-to-severe (CDAI 220≤)		18	0.79 (0.19)	0.80 (0.73-0.94)		18	0.70 (0.23)	0.71 (0.65-0.86)		0.09 (0.15)*
Perianal fistula severity groups										
Inactive (PDAI≤4)		52	0.86 (0.15)	0.87 (0.79-1.00)	0.2166	51	0.79 (0.19)	0.80 (0.69-1.00)	0.4171	0.06 (0.12)*
Active (PDAI>4)		30	0.85 (0.10)	0.85 (0.77-0.94)		29	0.76 (0.16)	0.76 (0.69-0.85)		0.09 (0.10)*

§ Mann-Whitney *U* test or Kruskal Wallis *H* test, where a $p < 0.05$ was considered statistically significant. * Wilcoxon signed-rank test, where a $p < 0.05$ was considered statistically significant.

CDAI = Crohn's Disease Activity Index; PDAI = Perianal disease Activity Index

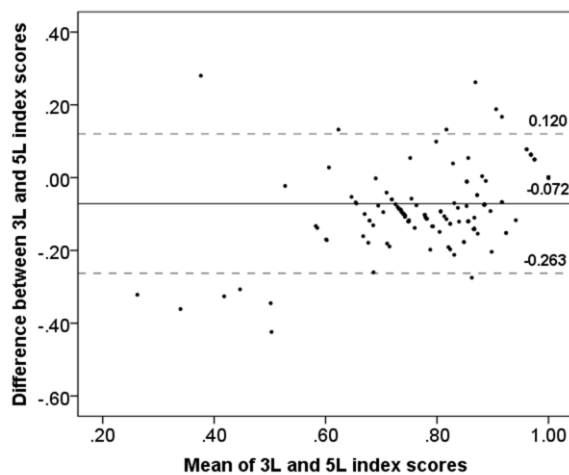
Figure legends

Fig. 1 Distribution of EQ-5D index scores from patients with Crohn's disease



The UK value set was applied on 3L [38] and the English on 5L data [39].

Fig. 2 Bland-Altman plot of the EQ-5D-3L and EQ-5D-5L index scores in Crohn's disease



The horizontal line represents the mean of the differences (d) between 3L and 5L index scores, while the 95% limits of agreement, obtained as $d \pm 1.96 * SD$ of d, are indicated by dashed lines.

References

1. Ng, S. C., Shi, H. Y., Hamidi, N., Underwood, F. E., Tang, W., Benchimol, E. I., et al. (2018). Worldwide incidence and prevalence of inflammatory bowel disease in the 21st century: a systematic review of population-based studies. *Lancet*, 390(10114), 2769-2778.
2. Kaplan, G. G. (2015). The global burden of IBD: from 2015 to 2025. *Nat Rev Gastroenterol Hepatol*, 12(12), 720-727.
3. Torres, J., Mehandru, S., Colombel, J. F., & Peyrin-Biroulet, L. (2017). Crohn's disease. *Lancet*, 389(10080), 1741-1755.
4. Harbord, M., Annese, V., Vavricka, S. R., Allez, M., Barreiro-de Acosta, M., Boberg, K. M., et al. (2016). The First European Evidence-based Consensus on Extra-intestinal Manifestations in Inflammatory Bowel Disease. *J Crohns Colitis*, 10(3), 239-254.
5. van der Have, M., van der Aalst, K. S., Kaptein, A. A., Leenders, M., Siersema, P. D., Oldenburg, B., et al. (2014). Determinants of health-related quality of life in Crohn's disease: a systematic review and meta-analysis. *J Crohns Colitis*, 8(2), 93-106.
6. Brodsky, V., Rencz, F., Pentek, M., Baji, P., Lakatos, P. L., & Gulacsi, L. (2016). A budget impact model for biosimilar infliximab in Crohn's disease in Bulgaria, the Czech Republic, Hungary, Poland, Romania, and Slovakia. *Expert Rev Pharmacoecon Outcomes Res*, 16(1), 119-125.
7. Rencz, F., Pentek, M., Bortlik, M., Zagorowicz, E., Hlavaty, T., Sliwczynski, A., et al. (2015). Biological therapy in inflammatory bowel diseases: access in Central and Eastern Europe. *World J Gastroenterol*, 21(6), 1728-1737.
8. Boncz, I., & Sebestyen, A. (2006). Financial deficits in the health services of the UK and Hungary. *Lancet*, 368(9539), 917-918.
9. Gulacsi, L., Pentek, M., Rencz, F., Brodsky, V., Baji, P., Vegh, Z., et al. (2017). Biosimilars for the management of inflammatory bowel diseases: economic considerations. *Curr Med Chem [Epub ahead of print]*
10. Haute Autorité de Santé (HAS). Choices in Methods for Economic Evaluation. Saint-Denis La Plaine, France: Department of Economics and Public Health Assessment. (2012). Available from: https://www.has-sante.fr/portail/upload/docs/application/pdf/2012-10/choices_in_methods_for_economic_evaluation.pdf Accessed: 22/04/2018
11. National Institute for Health and Care Excellence (NICE). Guide to the Methods of Technology Appraisal. (2013). Available from: <https://www.nice.org.uk/guidance/pmg9/resources/guide-to-the-methods-of-technology-appraisal-2013-pdf-2007975843781> Accessed: 01/04/2018
12. Zorginstituut Nederland. Richtlijn voor het uitvoeren van economische evaluaties in de gezondheidszorg. Zorginstituut Nederland, Diemen, The Netherlands. (2016). Available from: <https://www.zorginstituutnederland.nl/binaries/zinl/documenten/publicatie/2016/02/29/richtlijn-voor-het-uitvoeren-van-economische-evaluaties-in-de-gezondheidszorg/richtlijn-voor-het-uitvoeren-van-economische-evaluaties-in-de-gezondheidszorg.pdf> Accessed: 22/04/2018
13. Cleemput, I., Neyt, M., Van de Sande, S., & Thiry, N. (2012). Belgian guidelines for economic evaluations and budget impact analyses: second edition Available from: https://kce.fgov.be/sites/default/files/atoms/files/KCE_183_economic_evaluations_second_edition_Report.pdf. Accessed January 22, 2017.
14. Rencz, F., Gulacsi, L., Drummond, M., Golicki, D., Prevolnik Rupel, V., Simon, J., et al. (2016). EQ-5D in Central and Eastern Europe: 2000-2015. *Qual Life Res*, 25(11), 2693-2710.

15. Rowen, D., Azzabi Zouraq, I., Chevrou-Severac, H., & van Hout, B. (2017). International Regulations and Recommendations for Utility Data for Health Technology Assessment. *Pharmacoeconomics*, 35(Suppl 1), 11-19.
16. Sanders, G. D., Neumann, P. J., Basu, A., Brock, D. W., Feeny, D., Krahn, M., et al. (2016). Recommendations for Conduct, Methodological Practices, and Reporting of Cost-effectiveness Analyses: Second Panel on Cost-Effectiveness in Health and Medicine. *JAMA*, 316(10), 1093-1103.
17. Canadian Agency for Drugs and Technologies in Health. Guidelines for the Economic Evaluation of Health Technologies. (2006). Available from: https://www.cadth.ca/media/pdf/186_EconomicGuidelines_e.pdf Accessed: 04/12/2017
18. Huoponen, S., & Blom, M. (2015). A Systematic Review of the Cost-Effectiveness of Biologics for the Treatment of Inflammatory Bowel Diseases. *PLoS One*, 10(12), e0145087.
19. Pillai, N., Dusheiko, M., Burnand, B., & Pittet, V. (2017). A systematic review of cost-effectiveness studies comparing conventional, biological and surgical interventions for inflammatory bowel disease. *PLoS One*, 12(10), e0185500.
20. Rencz, F., Gulacsi, L., Pentek, M., Gecse, K. B., Dignass, A., Halfvarson, J., et al. (2017). Cost-utility of biological treatment sequences for luminal Crohn's disease in Europe. *Expert Rev Pharmacoecon Outcomes Res*, 17(6), 597-606.
21. Puneekar, Y. S., Sunderland, T., Hawkins, N., & Lindsay, J. (2010). Cost-effectiveness of scheduled maintenance treatment with infliximab for pediatric Crohn's disease. *Value Health*, 13(2), 188-195.
22. Baji, P., Gulácsi, L., Brodsky, V., Végh, Z., Danese, S., Irving, P. M., et al. (2018). Cost-effectiveness of biological treatment sequences for fistulising Crohn's disease across Europe. *United European Gastroenterology Journal*, 6(2), 310-321.
23. Malinowski, K. P., & Kawalec, P. (2016). Health utility of patients with Crohn's disease and ulcerative colitis: a systematic review and meta-analysis. *Expert Rev Pharmacoecon Outcomes Res*, 16(4), 441-453.
24. Brooks, R. (2012). *The EuroQol Group After 25 Years*: Springer Science & Business Media.
25. König, H. H., Ulshofer, A., Gregor, M., von Tirpitz, C., Reinshagen, M., Adler, G., et al. (2002). Validation of the EuroQol questionnaire in patients with inflammatory bowel disease. *Eur J Gastroenterol Hepatol*, 14(11), 1205-1215.
26. Stark, R. G., Reitmeir, P., Leidl, R., & König, H. H. (2010). Validity, reliability, and responsiveness of the EQ-5D in inflammatory bowel disease in Germany. *Inflamm Bowel Dis*, 16(1), 42-51.
27. Herdman, M., Gudex, C., Lloyd, A., Janssen, M., Kind, P., Parkin, D., et al. (2011). Development and preliminary testing of the new five-level version of EQ-5D (EQ-5D-5L). *Qual Life Res*, 20(10), 1727-1736.
28. Janssen, M. F., Pickard, A. S., Golicki, D., Gudex, C., Niewada, M., Scalone, L., et al. (2013). Measurement properties of the EQ-5D-5L compared to the EQ-5D-3L across eight patient groups: a multi-country study. *Qual Life Res*, 22(7), 1717-1727.
29. Buchholz, I., Janssen, M. F., Kohlmann, T., & Feng, Y. S. (2018). A Systematic Review of Studies Comparing the Measurement Properties of the Three-Level and Five-Level Versions of the EQ-5D. *Pharmacoeconomics*, 36(6), 645-661.
30. Norton, C., Dibley, L. B., Hart, A., Duncan, J., Emmanuel, A., Knowles, C. H., et al. (2015). Faecal incontinence intervention study (FINS): self-management booklet information with or without nurse support to improve continence in people with inflammatory bowel disease: study protocol for a randomized controlled trial. *Trials*, 16, 444.

31. Tew, G. A., Carpenter, R., Seed, M., Anderson, S., Langmead, L., Fairhurst, C., et al. (2017). Feasibility of high-intensity interval training and moderate-intensity continuous training in adults with inactive or mildly active Crohn's disease: study protocol for a randomised controlled trial. *Pilot Feasibility Stud*, 3, 17.
32. Pentek, M., Lakatos, P. L., Oorsprong, T., Gulacsi, L., Pavlova, M., Groot, W., et al. (2017). Access to biologicals in Crohn's disease in ten European countries. *World J Gastroenterol*, 23(34), 6294-6305.
33. EuroQol, G. (1990). EuroQol--a new facility for the measurement of health-related quality of life. *Health Policy*, 16(3), 199-208.
34. Brooks, R. (1996). EuroQol: the current state of play. *Health Policy*, 37(1), 53-72.
35. Poor, A. K., Rencz, F., Brodszky, V., Gulacsi, L., Beretzky, Z., Hidvegi, B., et al. (2017). Measurement properties of the EQ-5D-5L compared to the EQ-5D-3L in psoriasis patients. *Qual Life Res*, 26(12), 3409-3419.
36. Janssen, M. F., Birnie, E., Haagsma, J. A., & Bonsel, G. J. (2008). Comparing the standard EQ-5D three-level system with a five-level version. *Value Health*, 11(2), 275-284.
37. van Hout, B., Janssen, M. F., Feng, Y. S., Kohlmann, T., Busschbach, J., Golicki, D., et al. (2012). Interim scoring for the EQ-5D-5L: mapping the EQ-5D-5L to EQ-5D-3L value sets. *Value Health*, 15(5), 708-715.
38. Dolan, P. (1997). Modeling valuations for EuroQol health states. *Med Care*, 35(11), 1095-1108.
39. Devlin, N. J., Shah, K. K., Feng, Y., Mulhern, B., & van Hout, B. (2018). Valuing health-related quality of life: An EQ-5D-5L value set for England. *Health Econ*, 27(1), 7-22.
40. Winship, D. H., Summers, R. W., Singleton, J. W., Best, W. R., Becketl, J. M., Lenk, L. F., et al. (1979). National Cooperative Crohn's Disease Study: study design and conduct of the study. *Gastroenterology*, 77(4 Pt 2), 829-842.
41. Sandborn, W. J., Feagan, B. G., Hanauer, S. B., Lochs, H., Lofberg, R., Modigliani, R., et al. (2002). A review of activity indices and efficacy endpoints for clinical trials of medical therapy in adults with Crohn's disease. *Gastroenterology*, 122(2), 512-530.
42. Irvine, E. J. (1995). Usual therapy improves perianal Crohn's disease as measured by a new disease activity index. McMaster IBD Study Group. *J Clin Gastroenterol*, 20(1), 27-32.
43. Losco, A., Vigano, C., Conte, D., Cesana, B. M., & Basilisco, G. (2009). Assessing the activity of perianal Crohn's disease: comparison of clinical indices and computer-assisted anal ultrasound. *Inflamm Bowel Dis*, 15(5), 742-749.
44. Ripamonti, C. I. (2012). Pain management. *Ann Oncol*, 23 Suppl 10, x294-301.
45. Janssen, M. F., Birnie, E., & Bonsel, G. J. (2008). Quantification of the level descriptors for the standard EQ-5D three-level system and a five-level version according to two methods. *Qual Life Res*, 17(3), 463-473.
46. Pickard, A. S., De Leon, M. C., Kohlmann, T., Cella, D., & Rosenbloom, S. (2007). Psychometric comparison of the standard EQ-5D to a 5 level version in cancer patients. *Med Care*, 45(3), 259-263.
47. Buchholz, I., Thielker, K., Feng, Y. S., Kupatz, P., & Kohlmann, T. (2015). Measuring changes in health over time using the EQ-5D 3L and 5L: a head-to-head comparison of measurement properties and sensitivity to change in a German inpatient rehabilitation sample. *Qual Life Res*, 24(4), 829-835.
48. Shrout, P. E., & Fleiss, J. L. (1979). Intraclass correlations: uses in assessing rater reliability. *Psychol Bull*, 86(2), 420-428.
49. Cicchetti, D. (1994). Guidelines, criteria, and rules of thumb for evaluating normed and standardized assessment instruments in psychology. *Psychol Assess*, 6(4), 284-290.
50. Bland, J. M., & Altman, D. G. (1986). Statistical methods for assessing agreement between two methods of clinical measurement. *Lancet*, 1(8476), 307-310.

51. Shannon, C. E. (1948). The mathematical theory of communication. *The Bell System Technical Journal*, 27, 379–423.
52. Shannon, C. E., & Weaver, W. (1949). The Mathematical Theory of Communication. *Urbana: University of Illinois Press*, 104-107.
53. Swinscow, T., & Campbell, M. (2002). *Statistics at square one*. London, United Kingdom: BMJ.
54. Scalone, L., Ciampichini, R., Fagioli, S., Gardini, I., Fusco, F., Gaeta, L., et al. (2013). Comparing the performance of the standard EQ-5D 3L with the new version EQ-5D 5L in patients with chronic hepatic diseases. *Qual Life Res*, 22(7), 1707-1716.
55. Jia, Y. X., Cui, F. Q., Li, L., Zhang, D. L., Zhang, G. M., Wang, F. Z., et al. (2014). Comparison between the EQ-5D-5L and the EQ-5D-3L in patients with hepatitis B. *Qual Life Res*, 23(8), 2355-2363.
56. Ferreira, L. N., Ferreira, P. L., Ribeiro, F. P., & Pereira, L. N. (2016). Comparing the performance of the EQ-5D-3L and the EQ-5D-5L in young Portuguese adults. *Health Qual Life Outcomes*, 14(1), 89.
57. Yfantopoulos, J., Chantzaras, A., & Kontodimas, S. (2017). Assessment of the psychometric properties of the EQ-5D-3L and EQ-5D-5L instruments in psoriasis. *Arch Dermatol Res*, 309(5), 357-370.
58. Pan, C. W., Sun, H. P., Wang, X., Ma, Q., Xu, Y., Luo, N., et al. (2015). The EQ-5D-5L index score is more discriminative than the EQ-5D-3L index score in diabetes patients. *Qual Life Res*, 24(7), 1767-1774.
59. Janssen, M. F., Bonsel, G. J., & Luo, N. (2018). Is EQ-5D-5L Better Than EQ-5D-3L? A Head-to-Head Comparison of Descriptive Systems and Value Sets from Seven Countries. *Pharmacoeconomics [Epub ahead of print]*
60. Kim, S. H., Kim, H. J., Lee, S. I., & Jo, M. W. (2012). Comparing the psychometric properties of the EQ-5D-3L and EQ-5D-5L in cancer patients in Korea. *Qual Life Res*, 21(6), 1065-1073.
61. Golicki, D., Niewada, M., Karlinska, A., Buczek, J., Kobayashi, A., Janssen, M. F., et al. (2015). Comparing responsiveness of the EQ-5D-5L, EQ-5D-3L and EQ VAS in stroke patients. *Qual Life Res*, 24(6), 1555-1563.
62. Greene, M. E., Rader, K. A., Garellick, G., Malchau, H., Freiberg, A. A., & Rolfson, O. (2015). The EQ-5D-5L Improves on the EQ-5D-3L for Health-related Quality-of-life Assessment in Patients Undergoing Total Hip Arthroplasty. *Clin Orthop Relat Res*, 473(11), 3383-3390.
63. Buxton, M. J., Lacey, L. A., Feagan, B. G., Niecko, T., Miller, D. W., & Townsend, R. J. (2007). Mapping from disease-specific measures to utility: an analysis of the relationships between the Inflammatory Bowel Disease Questionnaire and Crohn's Disease Activity Index in Crohn's disease and measures of utility. *Value Health*, 10(3), 214-220.
64. de Dombal, F. T., & Softley, A. (1987). IOIBD report no 1: Observer variation in calculating indices of severity and activity in Crohn's disease. International Organisation for the Study of Inflammatory Bowel Disease. *Gut*, 28(4), 474-481.
65. Khanna, R., Nelson, S. A., Feagan, B. G., D'Haens, G., Sandborn, W. J., Zou, G. Y., et al. (2016). Endoscopic scoring indices for evaluation of disease activity in Crohn's disease. *Cochrane Database Syst Rev*(8), CD010642.
66. Peyrin-Biroulet, L., Panes, J., Sandborn, W. J., Vermeire, S., Danese, S., Feagan, B. G., et al. (2016). Defining Disease Severity in Inflammatory Bowel Diseases: Current and Future Directions. *Clin Gastroenterol Hepatol*, 14(3), 348-354 e317.

67. Regueiro, M., Kip, K. E., Schraut, W., Baidoo, L., Sepulveda, A. R., Pesci, M., et al. (2011). Crohn's disease activity index does not correlate with endoscopic recurrence one year after ileocolonic resection. *Inflamm Bowel Dis*, 17(1), 118-126.
68. Mulhern, B., Feng, Y., Shah, K., Janssen, M. F., Herdman, M., van Hout, B., et al. (2018). Comparing the UK EQ-5D-3L and English EQ-5D-5L Value Sets. *Pharmacoeconomics*, 36(6), 699-713.
69. Devlin, N., Brazier, J., Pickard, A. S., & Stolk, E. (2018). 3L, 5L, What the L? A NICE Conundrum. *Pharmacoeconomics*, 36(6), 637-640.
70. Hernandez Alava, M., Wailoo, A., Grimm, S., Pudney, S., Gomes, M., Sadique, Z., et al. (2018). EQ-5D-5L versus EQ-5D-3L: The Impact on Cost Effectiveness in the United Kingdom. *Value Health*, 21(1), 49-56.